

Anti-LY6E Antibody

Catalog # AP53855

Product Information

Application	WB
Primary Accession	Q16553
Reactivity	Human, Mouse, Rat
Host	Rabbit
Clonality	Polyclonal
Calculated MW	13507

Additional Information

Gene ID	4061
Other Names	9804; RIGE; SCA2; TSA1; Lymphocyte antigen 6E; Ly-6E; Retinoic acid-induced gene E protein; RIG-E; Stem cell antigen 2; SCA-2; Thymic shared antigen 1; TSA-1
Target/Specificity	Recognizes endogenous levels of LY6E protein.
Dilution	WB~~1/500 - 1/1000
Format	Liquid in 0.42% Potassium phosphate, 0.87% Sodium chloride, pH 7.3, 30% glycerol, and 0.09% (W/V) sodium azide.
Storage	Store at -20 °C.Stable for 12 months from date of receipt

Protein Information

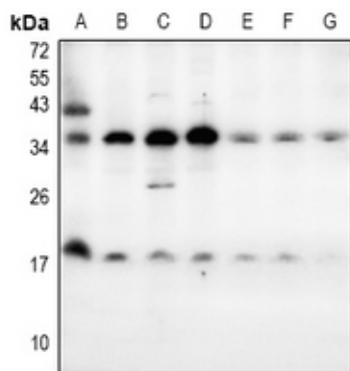
Name	LY6E (HGNC:6727)
Synonyms	9804, RIGE, SCA2, TSA1
Function	GPI-anchored cell surface protein that regulates T- lymphocytes proliferation, differentiation, and activation. Regulates the T-cell receptor (TCR) signaling by interacting with component CD3Z/CD247 at the plasma membrane, leading to CD3Z/CD247 phosphorylation modulation (By similarity). Restricts the entry of human coronaviruses, including SARS-CoV, MERS-CoV and SARS-CoV-2, by interfering with spike protein-mediated membrane fusion (PubMed: 32641482). Also plays an essential role in placenta formation by acting as the main receptor for syncytin-A (SynA). Therefore, participates in the normal fusion of syncytiotrophoblast layer I (SynT- I) and in the proper morphogenesis of both fetal and maternal vasculatures within the placenta. May also act as a modulator of nicotinic acetylcholine receptors (nAChRs) activity (By similarity).

Cellular Location	Cell membrane {ECO:0000250 UniProtKB:Q64253}; Lipid-anchor, GPI-anchor {ECO:0000250 UniProtKB:Q64253}
Tissue Location	Widely expressed, predominantly in liver, kidney, ovary, spleen and peripheral blood Leukocytes

Background

Rabbit polyclonal antibody to LY6E

Images



Western blot analysis of LY6E expression in mouse kidney (A), rat ovary (B), AML12 (C), PC12 (D), HepG2 (E), A2780 (F), SKOV3 (G) whole cell lysates.

Please note: All products are 'FOR RESEARCH USE ONLY. NOT FOR USE IN DIAGNOSTIC OR THERAPEUTIC PROCEDURES'.