

Anti-NCALD Antibody

Catalog # AP53857

Product Information

Application	WB
Primary Accession	P61601
Reactivity	Human, Mouse, Rat
Host	Rabbit
Clonality	Polyclonal
Calculated MW	22245

Additional Information

Gene ID	83988
Other Names	Neurocalcin-delta
Target/Specificity	KLH-conjugated synthetic peptide encompassing a sequence within the center region of human NCALD. The exact sequence is proprietary.
Dilution	WB~~1/500 - 1/1000
Format	Liquid in 0.42% Potassium phosphate, 0.87% Sodium chloride, pH 7.3, 30% glycerol, and 0.09% (W/V) sodium azide.
Storage	Store at -20 °C.Stable for 12 months from date of receipt

Protein Information

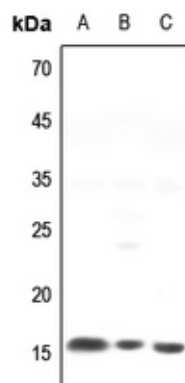
Name	NCALD
Function	May be involved in the calcium-dependent regulation of rhodopsin phosphorylation. Binds three calcium ions.
Tissue Location	Retina, cerebrum, cerebellum, brain stem, spinal cord, testis, ovary and small intestine

Background

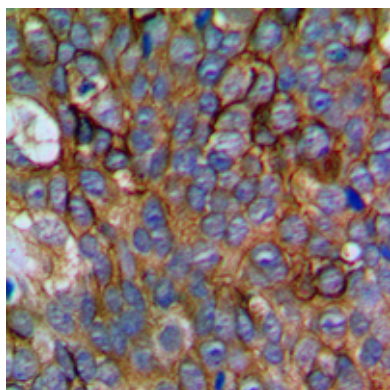
Rabbit polyclonal antibody to NCALD

Images

Western blot analysis of NCALD expression in mouse



heart (A), mouse liver (B), rat heart (C) whole cell lysates.



Immunohistochemical analysis of NCALD staining in human prostate cancer formalin fixed paraffin embedded tissue section. The section was pre-treated using heat mediated antigen retrieval with sodium citrate buffer (pH 6.0). The section was then incubated with the antibody at room temperature and detected using an HRP conjugated compact polymer system. DAB was used as the chromogen. The section was then counterstained with haematoxylin and mounted with DPX.

Please note: All products are 'FOR RESEARCH USE ONLY. NOT FOR USE IN DIAGNOSTIC OR THERAPEUTIC PROCEDURES'.