

Anti-NDUFB1 Antibody

Catalog # AP53858

Product Information

Application	WB
Primary Accession	O75438
Reactivity	Human, Mouse, Rat
Host	Rabbit
Clonality	Polyclonal
Calculated MW	6961

Additional Information

Gene ID	4707
Other Names	NADH dehydrogenase [ubiquinone] 1 beta subcomplex subunit 1; Complex I-MNLL; CI-MNLL; NADH-ubiquinone oxidoreductase MNLL subunit
Target/Specificity	KLH-conjugated synthetic peptide encompassing a sequence within the N-term region of human NDUFB1. The exact sequence is proprietary.
Dilution	WB~~1/500 - 1/1000
Format	Liquid in 0.42% Potassium phosphate, 0.87% Sodium chloride, pH 7.3, 30% glycerol, and 0.09% (W/V) sodium azide.
Storage	Store at -20 °C.Stable for 12 months from date of receipt

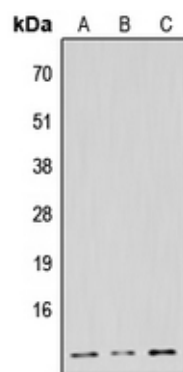
Protein Information

Name	NDUFB1
Function	Accessory subunit of the mitochondrial membrane respiratory chain NADH dehydrogenase (Complex I) that is believed not to be involved in catalysis. Complex I functions in the transfer of electrons from NADH to the respiratory chain. The immediate electron acceptor for the enzyme is believed to be ubiquinone.
Cellular Location	Mitochondrion inner membrane; Single-pass membrane protein; Matrix side

Background

Rabbit polyclonal antibody to NDUFB1

Images



Western blot analysis of NDUFB1 expression in HeLa (A), Raw264.7 (B), H9C2 (C) whole cell lysates.

Please note: All products are 'FOR RESEARCH USE ONLY. NOT FOR USE IN DIAGNOSTIC OR THERAPEUTIC PROCEDURES'.