

Anti-PINX1 Antibody

Catalog # AP53860

Product Information

Application	WB
Primary Accession	Q96BK5
Reactivity	Human, Mouse, Rat
Host	Rabbit
Clonality	Polyclonal
Calculated MW	37035

Additional Information

Gene ID	54984
Other Names	LPTL; LPTS; PIN2/TERF1-interacting telomerase inhibitor 1; Liver-related putative tumor suppressor; Pin2-interacting protein X1; Protein 67-11-3; TRF1-interacting protein 1
Target/Specificity	Recognizes endogenous levels of PINX1 protein.
Dilution	WB~~1/500 - 1/1000
Format	Liquid in 0.42% Potassium phosphate, 0.87% Sodium chloride, pH 7.3, 30% glycerol, and 0.09% (W/V) sodium azide.
Storage	Store at -20 °C.Stable for 12 months from date of receipt

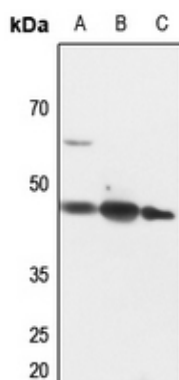
Protein Information

Name	PINX1
Synonyms	LPTL, LPTS
Function	Microtubule-binding protein essential for faithful chromosome segregation. Mediates TRF1 and TERT accumulation in nucleolus and enhances TRF1 binding to telomeres. Inhibits telomerase activity. May inhibit cell proliferation and act as tumor suppressor.
Cellular Location	Nucleus. Nucleus, nucleolus. Chromosome, telomere. Chromosome, centromere, kinetochore Note=Localizes in nucleoli, at telomere speckles and to the outer plate of kinetochores. Localization to the kinetochore is mediated by its central region and depends on NDC80 and CENPE
Tissue Location	Ubiquitous; expressed at low levels. Not detectable in a number of hepatocarcinoma cell lines

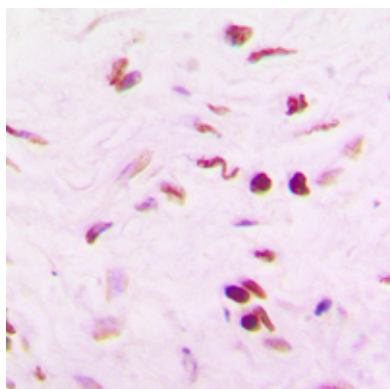
Background

Rabbit polyclonal antibody to PINX1

Images



Western blot analysis of PINX1 expression in rat heart (A), rat muscle (B), rat brain (C) whole cell lysates.



Immunohistochemical analysis of PINX1 staining in human lung cancer formalin fixed paraffin embedded tissue section. The section was pre-treated using heat mediated antigen retrieval with sodium citrate buffer (pH 6.0). The section was then incubated with the antibody at room temperature and detected using an HRP conjugated compact polymer system. DAB was used as the chromogen. The section was then counterstained with haematoxylin and mounted with DPX.

Please note: All products are 'FOR RESEARCH USE ONLY. NOT FOR USE IN DIAGNOSTIC OR THERAPEUTIC PROCEDURES'.