

Anti-PLXDC1 Antibody

Catalog # AP53861

Product Information

Application	WB
Primary Accession	Q8IUU5
Reactivity	Human, Mouse, Rat
Host	Rabbit
Clonality	Polyclonal
Calculated MW	55760

Additional Information

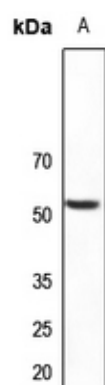
Gene ID	57125
Other Names	TEM3; TEM7; Plexin domain-containing protein 1; Tumor endothelial marker 3; Tumor endothelial marker 7
Target/Specificity	KLH-conjugated synthetic peptide encompassing a sequence within the center region of human PLXDC1. The exact sequence is proprietary.
Dilution	WB~~1/500 - 1/1000
Format	Liquid in 0.42% Potassium phosphate, 0.87% Sodium chloride, pH 7.3, 30% glycerol, and 0.09% (W/V) sodium azide.
Storage	Store at -20 °C.Stable for 12 months from date of receipt

Protein Information

Name	PLXDC1
Synonyms	TEM3, TEM7
Function	Plays a critical role in endothelial cell capillary morphogenesis.
Cellular Location	Secreted [Isoform 2]: Secreted. [Isoform 4]: Cytoplasm.
Tissue Location	Detected in urine (at protein level) (PubMed:25326458, PubMed:36213313, PubMed:37453717). Detected in endothelial cells from colorectal cancer, and in endothelial cells from primary cancers of the lung, liver, pancreas, breast and brain. Not detectable in endothelial cells from normal tissue. Expressed in fibrovascular membrane with increased expression in individuals with proliferative diabetic retinopathy.

Background

Images



Western blot analysis of PLXDC1 expression in rat liver (A) whole cell lysates.

Please note: All products are 'FOR RESEARCH USE ONLY. NOT FOR USE IN DIAGNOSTIC OR THERAPEUTIC PROCEDURES'.