

Anti-S100-A7 Antibody

Catalog # AP53868

Product Information

Application	WB
Primary Accession	P31151
Reactivity	Human, Mouse, Rat
Host	Rabbit
Clonality	Polyclonal
Calculated MW	11471

Additional Information

Gene ID	6278
Other Names	PSOR1; S100A7C; Protein S100-A7; Psoriasin; S100 calcium-binding protein A7
Target/Specificity	Recognizes endogenous levels of S100-A7 protein.
Dilution	WB~~1/500 - 1/1000
Format	Liquid in 0.42% Potassium phosphate, 0.87% Sodium chloride, pH 7.3, 30% glycerol, and 0.09% (W/V) sodium azide.
Storage	Store at -20 °C.Stable for 12 months from date of receipt

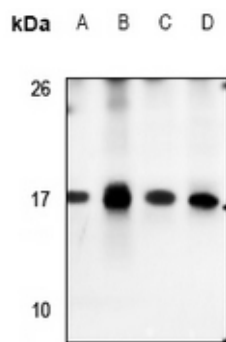
Protein Information

Name	S100A7
Synonyms	PSOR1, S100A7C
Cellular Location	Cytoplasm. Secreted. Note=Secreted by a non-classical secretory pathway
Tissue Location	Fetal ear, skin, and tongue and human cell lines. Highly up-regulated in psoriatic epidermis. Also highly expressed in the urine of bladder squamous cell carcinoma (SCC) bearing patients

Background

Rabbit polyclonal antibody to S100-A7

Images



Western blot analysis of S100-A7 expression in mouse testis (A), HeLa (B), EC9706 (C), K562 (D) whole cell lysates.

Please note: All products are 'FOR RESEARCH USE ONLY. NOT FOR USE IN DIAGNOSTIC OR THERAPEUTIC PROCEDURES'.