

Anti-CD92 Antibody

Catalog # AP53871

Product Information

Application	WB
Primary Accession	Q8WWI5
Reactivity	Human, Mouse, Rat
Host	Rabbit
Clonality	Polyclonal
Calculated MW	73302

Additional Information

Gene ID	23446
Other Names	CD92; CDW92; CTL1; Choline transporter-like protein 1; CDw92; Solute carrier family 44 member 1; CD92
Target/Specificity	KLH-conjugated synthetic peptide encompassing a sequence within the center region of human CD92. The exact sequence is proprietary.
Dilution	WB~~1/500 - 1/1000
Format	Liquid in 0.42% Potassium phosphate, 0.87% Sodium chloride, pH 7.3, 30% glycerol, and 0.09% (W/V) sodium azide.
Storage	Store at -20 °C.Stable for 12 months from date of receipt

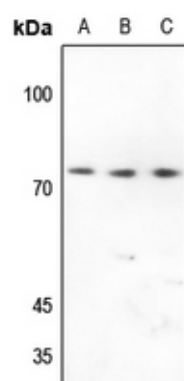
Protein Information

Name	SLC44A1 (HGNC:18798)
Synonyms	CD92, CDW92, CTL1
Function	Choline/H ⁺ antiporter (PubMed: 19357133 , PubMed: 23651124 , PubMed: 31855247 , PubMed: 33789160). Also acts as a high-affinity ethanolamine/H ⁺ antiporter, regulating the supply of extracellular ethanolamine (Etn) for the CDP-Etn pathway, redistribute intracellular Etn and balance the CDP-Cho and CDP-Etn arms of the Kennedy pathway (PubMed: 33789160). Involved in membrane synthesis and myelin production (PubMed: 31855247).
Cellular Location	Cell membrane; Multi-pass membrane protein. Mitochondrion outer membrane; Multi-pass membrane protein
Tissue Location	Expressed in various cells of the hematopoietic system.

Background

Rabbit polyclonal antibody to CD92

Images



Western blot analysis of CD92 expression in HEK293T (A), HeLa (B), H446 (C) whole cell lysates.

Please note: All products are 'FOR RESEARCH USE ONLY. NOT FOR USE IN DIAGNOSTIC OR THERAPEUTIC PROCEDURES'.