

# Anti-XCL1 Antibody

Catalog # AP53879

## Product Information

---

Application	WB
Primary Accession	<a href="#">P47992</a>
Other Accession	<a href="#">Q9UBD3</a>
Reactivity	Human, Mouse, Rat
Host	Rabbit
Clonality	Polyclonal
Calculated MW	12517

## Additional Information

---

Gene ID	6375
Other Names	XCL1; LTN; SCYC1; Lymphotactin; ATAC; C motif chemokine 1; Cytokine SCM-1; Lymphotaxin; SCM-1-alpha; Small-inducible cytokine C1; XC chemokine ligand 1; XCL2; SCYC2; Cytokine SCM-1 beta; C motif chemokine 2; XC chemokine ligand 2
Target/Specificity	KLH-conjugated synthetic peptide encompassing a sequence within the center region of human XCL1. The exact sequence is proprietary.
Dilution	WB~~1/500 - 1/1000
Format	Liquid in 0.42% Potassium phosphate, 0.87% Sodium chloride, pH 7.3, 30% glycerol, and 0.09% (W/V) sodium azide.
Storage	Store at -20 °C.Stable for 12 months from date of receipt

## Protein Information

---

Name	XCL1
Synonyms	LTN, SCYC1
Function	Chemotactic activity for lymphocytes but not for monocytes or neutrophils. In thymus, mediates medullary accumulation of thymic dendritic cells and contributes to regulatoy T cell development, playing a role in self-tolerance establishment.
Cellular Location	Secreted.
Tissue Location	Highest level in spleen, lower in peripheral leukocytes and very low levels in lung, colon and small intestine

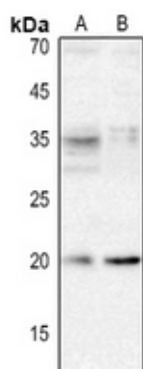
## Background

---

Rabbit polyclonal antibody to XCL1

## Images

---



Western blot analysis of XCL1 expression in Hela (A), H1688 (B) whole cell lysates.

Please note: All products are 'FOR RESEARCH USE ONLY. NOT FOR USE IN DIAGNOSTIC OR THERAPEUTIC PROCEDURES'.