

# Anti-C17 Antibody

Catalog # AP53881

## Product Information

---

Application	WB
Primary Accession	<a href="#">Q9NRR1</a>
Reactivity	Human
Host	Rabbit
Clonality	Polyclonal
Calculated MW	15577

## Additional Information

---

Gene ID	54360
Other Names	C4orf4; Cytokine-like protein 1; Protein C17
Target/Specificity	KLH-conjugated synthetic peptide encompassing a sequence within the center region of human C17. The exact sequence is proprietary.
Dilution	WB~~1/500 - 1/1000
Format	Liquid in 0.42% Potassium phosphate, 0.87% Sodium chloride, pH 7.3, 30% glycerol, and 0.09% (W/V) sodium azide.
Storage	Store at -20 °C.Stable for 12 months from date of receipt

## Protein Information

---

Name	CYTL1
Synonyms	C4orf4
Cellular Location	Secreted.
Tissue Location	Specifically expressed in CD34+ hematopoietic cells.

## Background

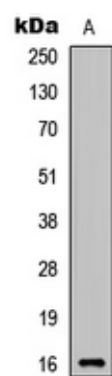
---

Rabbit polyclonal antibody to C17

## Images

---

Western blot analysis of C17 expression in SHSY5Y (A)



whole cell lysates.

Please note: All products are 'FOR RESEARCH USE ONLY. NOT FOR USE IN DIAGNOSTIC OR THERAPEUTIC PROCEDURES'.