

IFT172 Antibody (N-term)

Affinity Purified Rabbit Polyclonal Antibody (Pab)

Catalog # AP5388a

Product Information

Application	WB, FC, E
Primary Accession	Q9UG01
Other Accession	Q9JKU3 , Q6VH22 , NP_056477.1
Reactivity	Human, Mouse
Predicted	Rat
Host	Rabbit
Clonality	Polyclonal
Isotype	Rabbit IgG
Clone Names	RB26557
Calculated MW	197576
Antigen Region	28-57

Additional Information

Gene ID	26160
Other Names	Intraflagellar transport protein 172 homolog, IFT172, KIAA1179
Target/Specificity	This IFT172 antibody is generated from rabbits immunized with a KLH conjugated synthetic peptide between 28-57 amino acids from the N-terminal region of human IFT172.
Dilution	WB~~1:1000 FC~~1:10~50 E~~Use at an assay dependent concentration.
Format	Purified polyclonal antibody supplied in PBS with 0.09% (W/V) sodium azide. This antibody is purified through a protein A column, followed by peptide affinity purification.
Storage	Maintain refrigerated at 2-8°C for up to 2 weeks. For long term storage store at -20°C in small aliquots to prevent freeze-thaw cycles.
Precautions	IFT172 Antibody (N-term) is for research use only and not for use in diagnostic or therapeutic procedures.

Protein Information

Name	IFT172
Synonyms	KIAA1179
Function	Required for the maintenance and formation of cilia. Plays an indirect role

in hedgehog (Hh) signaling, cilia being required for all activity of the hedgehog pathway (By similarity).

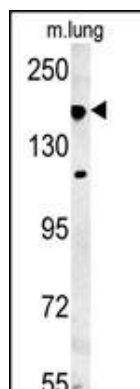
Cellular Location

Cell projection, cilium. Note=Localized to the axoneme and around the base of the cilium

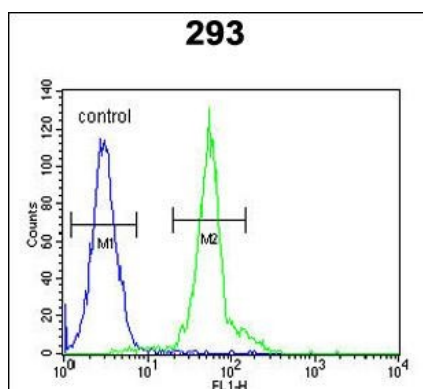
References

Howard, P.W., et al. J. Biol. Chem. 275(18):13336-13342(2000)

Images



IFT172 Antibody (N-term)(Cat. #AP5388a) western blot analysis in mouse lung tissue lysates (35ug/lane). This demonstrates the IFT172 antibody detected IFT172 protein (arrow).



IFT172 Antibody (N-term) (Cat. #AP5388a) flow cytometric analysis of 293 cells (right histogram) compared to a negative control cell (left histogram). FITC-conjugated goat-anti-rabbit secondary antibodies were used for the analysis.

Please note: All products are 'FOR RESEARCH USE ONLY. NOT FOR USE IN DIAGNOSTIC OR THERAPEUTIC PROCEDURES'.