

Anti-SSTR4 Antibody

Catalog # AP53899

Product Information

| | |
|--------------------------|------------------------|
| Application | WB |
| Primary Accession | P31391 |
| Reactivity | Human, Mouse, Rat |
| Host | Rabbit |
| Clonality | Polyclonal |
| Calculated MW | 42003 |

Additional Information

| | |
|---------------------------|--|
| Gene ID | 6754 |
| Other Names | Somatostatin receptor type 4; SS-4-R; SS4-R; SS4R |
| Target/Specificity | KLH-conjugated synthetic peptide encompassing a sequence within the center region of human SSTR4. The exact sequence is proprietary. |
| Dilution | WB~~1/500 - 1/1000 |
| Format | Liquid in 0.42% Potassium phosphate, 0.87% Sodium chloride, pH 7.3, 30% glycerol, and 0.09% (W/V) sodium azide. |
| Storage | Store at -20 °C.Stable for 12 months from date of receipt |

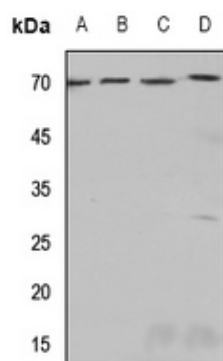
Protein Information

| | |
|--------------------------|--|
| Name | SSTR4 |
| Function | Receptor for somatostatin-14. The activity of this receptor is mediated by G proteins which inhibits adenylyl cyclase. It is functionally coupled not only to inhibition of adenylate cyclase, but also to activation of both arachidonate release and mitogen-activated protein (MAP) kinase cascade. Mediates antiproliferative action of somatostatin in tumor cells. |
| Cellular Location | Cell membrane; Multi-pass membrane protein. |
| Tissue Location | Specifically expressed in fetal and adult brain, lung tissue, stomach, and in lesser quantities in the kidney, pituitary and adrenals |

Background

Rabbit polyclonal antibody to SSTR4

Images



Western blot analysis of SSTR4 expression in mouse brain (A), mouse lung (B), mouse kidney (C), rat kidney (D) whole cell lysates.

Please note: All products are 'FOR RESEARCH USE ONLY. NOT FOR USE IN DIAGNOSTIC OR THERAPEUTIC PROCEDURES'.