

Anti-MYL9 Antibody

Catalog # AP53909

Product Information

Application	WB, IF
Primary Accession	P24844
Other Accession	P19105
Reactivity	Human, Mouse, Rat
Host	Rabbit
Clonality	Polyclonal
Calculated MW	19827

Additional Information

Gene ID	10398
Other Names	MYL9; MLC2; MRLC1; MYRL2; Myosin regulatory light polypeptide 9; 20 kDa myosin light chain; LC20; MLC-2C; Myosin RLC; Myosin regulatory light chain 2, smooth muscle isoform; Myosin regulatory light chain 9; Myosin regulatory light chain MRLC1; MYL12A; MLCB; MRLC3; RLC; Myosin regulatory light chain 12A; MLC-2B; Myosin RLC; Myosin regulatory light chain 2, nonsarcomeric; Myosin regulatory light chain MRLC3
Target/Specificity	Recognizes endogenous levels of MYL9 protein.
Dilution	WB~~1/500 - 1/1000 IF~~1/50 - 1/200
Format	Liquid in 0.42% Potassium phosphate, 0.87% Sodium chloride, pH 7.3, 30% glycerol, and 0.09% (W/V) sodium azide.
Storage	Store at -20 °C.Stable for 12 months from date of receipt

Protein Information

Name	MYL9
Synonyms	MLC2, MRLC1, MYRL2
Function	Myosin regulatory subunit that plays an important role in regulation of both smooth muscle and nonmuscle cell contractile activity via its phosphorylation. Implicated in cytokinesis, receptor capping, and cell locomotion (PubMed: 11942626 , PubMed: 2526655). In myoblasts, may regulate PIEZO1-dependent cortical actomyosin assembly involved in myotube formation (By similarity).
Cellular Location	Cytoplasm, cytoskeleton {ECO:0000250 UniProtKB:Q9CQ19}. Cytoplasm, cell cortex {ECO:0000250 UniProtKB:Q9CQ19}. Note=Colocalizes with F-actin,

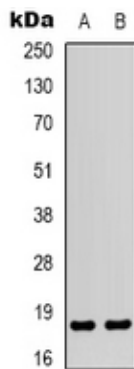
Tissue Location

Smooth muscle tissues and in some, but not all, nonmuscle cells.

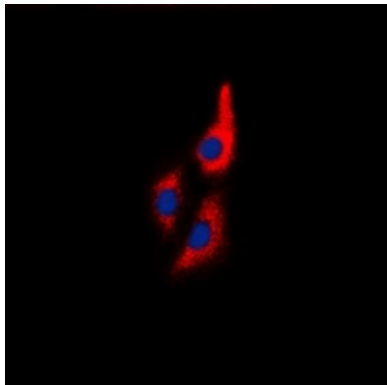
Background

Rabbit polyclonal antibody to MYL9

Images



Western blot analysis of MYL9 expression in Jurkat (A), COLO205 (B) whole cell lysates.



Immunofluorescent analysis of MYL9 staining in Jurkat cells. Formalin-fixed cells were permeabilized with 0.1% Triton X-100 in TBS for 5-10 minutes and blocked with 3% BSA-PBS for 30 minutes at room temperature. Cells were probed with the primary antibody in 3% BSA-PBS and incubated overnight at 4 °C in a humidified chamber. Cells were washed with PBST and incubated with a DyLight 594-conjugated secondary antibody (red) in PBS at room temperature in the dark. DAPI was used to stain the cell nuclei (blue).

Please note: All products are 'FOR RESEARCH USE ONLY. NOT FOR USE IN DIAGNOSTIC OR THERAPEUTIC PROCEDURES'.