

# Anti-Glycerol Kinase 1 Antibody

Catalog # AP53911

## Product Information

---

Application	WB
Primary Accession	<a href="#">P32189</a>
Other Accession	<a href="#">Q14409</a>
Reactivity	Human, Mouse, Rat
Host	Rabbit
Clonality	Polyclonal
Calculated MW	61245

## Additional Information

---

Gene ID	2710
Other Names	GK; Glycerol kinase; GK; Glycerokinase; ATP:glycerol 3-phosphotransferase; GK3P; GKP3; GKTB; Putative glycerol kinase 3; GK 3; Glycerokinase 3; ATP:glycerol 3-phosphotransferase 3; Glycerol kinase, testis specific 1
Target/Specificity	Recognizes endogenous levels of Glycerol Kinase 1 protein.
Dilution	WB~~1/500 - 1/1000
Format	Liquid in 0.42% Potassium phosphate, 0.87% Sodium chloride, pH 7.3, 30% glycerol, and 0.09% (W/V) sodium azide.
Storage	Store at -20 °C.Stable for 12 months from date of receipt

## Protein Information

---

Name	GK ( <a href="#">HGNC:4289</a> )
Function	Kinase that plays a key role in glycerol metabolism, catalyzing its phosphorylation to produce sn-glycerol 3-phosphate. Sn- glycerol 3-phosphate is a crucial intermediate in various metabolic pathways, such as the synthesis of glycerolipids and triglycerides, glycogenesis, glycolysis and gluconeogenesis.
Cellular Location	Mitochondrion outer membrane; Single-pass membrane protein. Nucleus. Cytoplasm, cytosol. Note=Glycerol kinase activity is more cytosolic in some tissues. It probably represents the expression of isoforms lacking a transmembrane domain [Isoform 4]: Cytoplasm, cytosol. Note=In adult tissues, such as liver the glycerol kinase activity is more cytosolic. It probably represents the expression of this isoform which lacks a transmembrane domain

## Tissue Location

[Isoform 2]: Widely expressed in fetal and adult tissues. [Isoform 4]: The sole isoform expressed in adult liver and kidney.

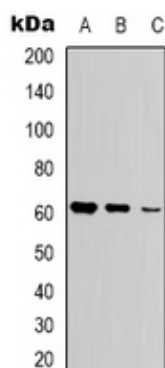
## Background

---

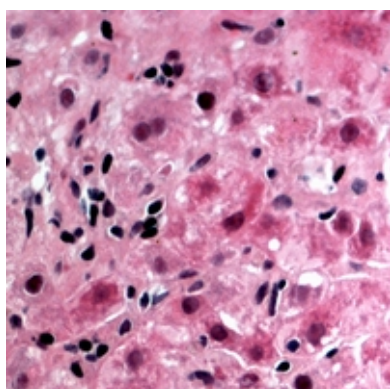
Rabbit polyclonal antibody to Glycerol Kinase 1

## Images

---



Western blot analysis of Glycerol Kinase 1 expression in Jurkat (A), HepG2 (B), HEK293T (C) whole cell lysates.



Immunohistochemical analysis of Glycerol Kinase 1 staining in human liver cancer formalin fixed paraffin embedded tissue section. The section was pre-treated using heat mediated antigen retrieval with sodium citrate buffer (pH 6.0). The section was then incubated with the antibody at room temperature and detected using an HRP conjugated compact polymer system. AEC was used as the chromogen. The section was then counterstained with haematoxylin and mounted with DPX.

Please note: All products are 'FOR RESEARCH USE ONLY. NOT FOR USE IN DIAGNOSTIC OR THERAPEUTIC PROCEDURES'.