

Anti-ISG20L2 Antibody

Catalog # AP53943

Product Information

| | |
|--------------------------|------------------------|
| Application | WB |
| Primary Accession | Q9H9L3 |
| Reactivity | Human, Mouse, Rat |
| Host | Rabbit |
| Clonality | Polyclonal |
| Calculated MW | 39154 |

Additional Information

| | |
|---------------------------|---|
| Gene ID | 81875 |
| Other Names | Interferon-stimulated 20 kDa exonuclease-like 2 |
| Target/Specificity | Recognizes endogenous levels of ISG20L2 protein. |
| Dilution | WB~~1/500 - 1/1000 |
| Format | Liquid in 0.42% Potassium phosphate, 0.87% Sodium chloride, pH 7.3, 30% glycerol, and 0.09% (W/V) sodium azide. |
| Storage | Store at -20 °C.Stable for 12 months from date of receipt |

Protein Information

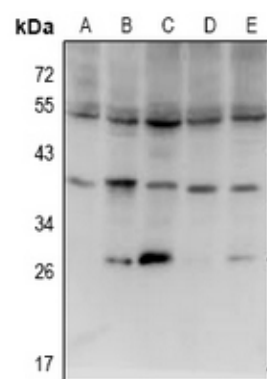
| | |
|--------------------------|---|
| Name | ISG20L2 |
| Function | 3'-> 5'-exoribonuclease involved in ribosome biogenesis in the processing of the 12S pre-rRNA. Displays a strong specificity for a 3'-end containing a free hydroxyl group. |
| Cellular Location | Nucleus, nucleolus |

Background

Rabbit polyclonal antibody to ISG20L2

Images

Western blot analysis of ISG20L2 expression in SGC7901 (A), PC12 (B), BV2 (C), A549 (D), LO2 (E) whole cell lysates.



Please note: All products are 'FOR RESEARCH USE ONLY. NOT FOR USE IN DIAGNOSTIC OR THERAPEUTIC PROCEDURES'.