

# Anti-Trypsin 2 Antibody

Catalog # AP53948

## Product Information

---

<b>Application</b>	WB
<b>Primary Accession</b>	<a href="#">P07478</a>
<b>Reactivity</b>	Human, Mouse, Rat
<b>Host</b>	Rabbit
<b>Clonality</b>	Polyclonal
<b>Calculated MW</b>	26488

## Additional Information

---

<b>Gene ID</b>	5645
<b>Other Names</b>	TRY2; TRYP2; Trypsin-2; Anionic trypsinogen; Serine protease 2; Trypsin II
<b>Target/Specificity</b>	Recognizes endogenous levels of Trypsin 2 protein.
<b>Dilution</b>	WB~~1/500 - 1/1000
<b>Format</b>	Liquid in 0.42% Potassium phosphate, 0.87% Sodium chloride, pH 7.3, 30% glycerol, and 0.09% (W/V) sodium azide.
<b>Storage</b>	Store at -20 °C.Stable for 12 months from date of receipt

## Protein Information

---

<b>Name</b>	PRSS2
<b>Synonyms</b>	TRY2, TRYP2
<b>Function</b>	In the ileum, may be involved in defensin processing, including DEFA5.
<b>Cellular Location</b>	Secreted, extracellular space.
<b>Tissue Location</b>	Expressed in Paneth cells, at the base of small intestinal crypts.

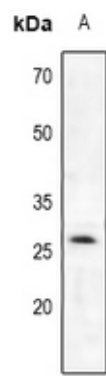
## Background

---

Rabbit polyclonal antibody to Trypsin 2

## Images

---



Western blot analysis of Trypsin 2 expression in HT102 (A), SW620 (B), CT26 (C), PC12 (D) whole cell lysates.

Please note: All products are 'FOR RESEARCH USE ONLY. NOT FOR USE IN DIAGNOSTIC OR THERAPEUTIC PROCEDURES'.