

# Anti-ADAM12-L Antibody

Catalog # AP53953

## Product Information

<b>Application</b>	WB
<b>Primary Accession</b>	<a href="#">O43184-1</a>
<b>Reactivity</b>	Human, Mouse, Rat
<b>Host</b>	Rabbit
<b>Clonality</b>	Polyclonal

## Additional Information

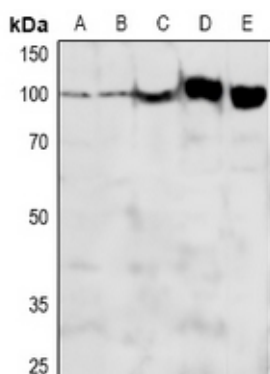
<b>Other Names</b>	MLTN; Disintegrin and metalloproteinase domain-containing protein 12; ADAM 12; Meltrin-alpha
<b>Target/Specificity</b>	KLH-conjugated synthetic peptide encompassing a sequence within the center region of human ADAM12-L. The exact sequence is proprietary.
<b>Dilution</b>	WB~~1/500 - 1/1000
<b>Format</b>	Liquid in 0.42% Potassium phosphate, 0.87% Sodium chloride, pH 7.3, 30% glycerol, and 0.09% (W/V) sodium azide.
<b>Storage</b>	Store at -20 °C.Stable for 12 months from date of receipt

## Protein Information

## Background

Rabbit polyclonal antibody to ADAM12-L

## Images



Western blot analysis of ADAM12-L expression in PC3 (A), HCT116 (B), U87MG (C), mouse brain (D), rat brain (E) whole cell lysates.

Please note: All products are 'FOR RESEARCH USE ONLY. NOT FOR USE IN DIAGNOSTIC OR THERAPEUTIC PROCEDURES'.