

Anti-Connexin 31.3 Antibody

Catalog # AP53964

Product Information

Application	WB
Primary Accession	Q8NEK1
Reactivity	Human, Mouse, Rat
Host	Rabbit
Clonality	Polyclonal
Calculated MW	31299

Additional Information

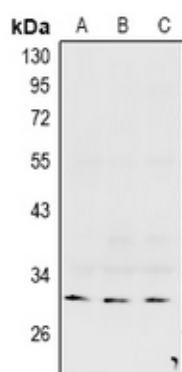
Gene ID	349149
Other Names	GJE1; Gap junction gamma-3 protein; Connexin-30.2; Cx30.2; Connexin-31.3; Cx31.3; Gap junction epsilon-1 protein
Target/Specificity	KLH-conjugated synthetic peptide encompassing a sequence within the center region of human Connexin 31.3. The exact sequence is proprietary.
Dilution	WB~~1/500 - 1/1000
Format	Liquid in 0.42% Potassium phosphate, 0.87% Sodium chloride, pH 7.3, 30% glycerol, and 0.09% (W/V) sodium azide.
Storage	Store at -20 °C.Stable for 12 months from date of receipt

Protein Information

Name	GJC3
Synonyms	GJE1
Function	One gap junction consists of a cluster of closely packed pairs of transmembrane channels, the connexons, through which materials of low MW diffuse from one cell to a neighboring cell.
Cellular Location	Cell membrane; Multi-pass membrane protein. Cell junction, gap junction
Tissue Location	CNS specific. Expression is restricted to brain, spinal cord, and sciatic nerve. According to PubMed:12881038, expression is abundant in skeletal muscle, liver, and heart, and to a minor degree in pancreas and kidney.

Background

Images



Western blot analysis of Connexin 31.3 expression in mouse brain (A), rat brain (B), HepG2 (C) whole cell lysates.

Please note: All products are 'FOR RESEARCH USE ONLY. NOT FOR USE IN DIAGNOSTIC OR THERAPEUTIC PROCEDURES'.