

# Anti-RASL10B Antibody

Catalog # AP53975

## Product Information

---

<b>Application</b>	WB
<b>Primary Accession</b>	<a href="#">Q96S79</a>
<b>Reactivity</b>	Human, Mouse
<b>Host</b>	Rabbit
<b>Clonality</b>	Polyclonal
<b>Calculated MW</b>	23229

## Additional Information

---

<b>Gene ID</b>	91608
<b>Other Names</b>	Ras-like protein family member 10B; Ras-like protein VTS58635; Ras-related protein 17; RRP17
<b>Target/Specificity</b>	KLH-conjugated synthetic peptide encompassing a sequence within the center region of human RASL10B. The exact sequence is proprietary.
<b>Dilution</b>	WB~~1/500 - 1/1000
<b>Format</b>	Liquid in 0.42% Potassium phosphate, 0.87% Sodium chloride, pH 7.3, 30% glycerol, and 0.09% (W/V) sodium azide.
<b>Storage</b>	Store at -20 °C.Stable for 12 months from date of receipt

## Protein Information

---

<b>Name</b>	RASL10B
<b>Function</b>	May facilitate the release of atrial natriuretic peptide by cardiomyocytes and hence play a role in the regulation of arterial pressure.
<b>Cellular Location</b>	Cell membrane; Lipid-anchor; Cytoplasmic side
<b>Tissue Location</b>	Expressed at high levels in skeletal muscle and, at much lower levels, in heart, brain and pancreas

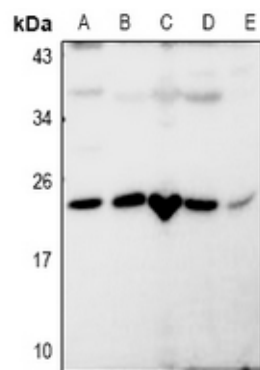
## Background

---

Rabbit polyclonal antibody to RASL10B

## Images

---



Western blot analysis of RASL10B expression in A549 (A), LOVO (B), SP20 (C), PMVEC (D), HeLa (E) whole cell lysates.

Please note: All products are 'FOR RESEARCH USE ONLY. NOT FOR USE IN DIAGNOSTIC OR THERAPEUTIC PROCEDURES'.