

Anti-CD172g Antibody

Catalog # AP53980

Product Information

Application	WB
Primary Accession	Q9P1W8
Reactivity	Human, Mouse, Rat
Host	Rabbit
Clonality	Polyclonal
Calculated MW	42498

Additional Information

Gene ID	55423
Other Names	SIRPB2; Signal-regulatory protein gamma; SIRP-gamma; CD172 antigen-like family member B; Signal-regulatory protein beta-2; SIRP-b2; SIRP-beta-2; CD172g
Target/Specificity	KLH-conjugated synthetic peptide encompassing a sequence within the center region of human CD172g. The exact sequence is proprietary.
Dilution	WB~~1/500 - 1/1000
Format	Liquid in 0.42% Potassium phosphate, 0.87% Sodium chloride, pH 7.3, 30% glycerol, and 0.09% (W/V) sodium azide.
Storage	Store at -20 °C.Stable for 12 months from date of receipt

Protein Information

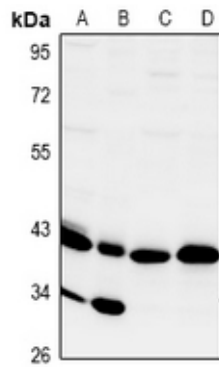
Name	SIRPG
Synonyms	SIRPB2
Function	Probable immunoglobulin-like cell surface receptor. On binding with CD47, mediates cell-cell adhesion. Engagement on T-cells by CD47 on antigen-presenting cells results in enhanced antigen- specific T-cell proliferation and costimulates T-cell activation.
Cellular Location	Membrane; Single- pass type I membrane protein
Tissue Location	Detected in liver, and at very low levels in brain, heart, lung, pancreas, kidney, placenta and skeletal muscle. Expressed on CD4+ T-cells, CD8+ T-cells, CD56-bright natural killer (NK) cells, CD20+ cells, and all activated NK cells. Mainly present in the paracortical T-cell area of lymph nodes, with only sparse positive cells in the mantle and in the germinal center of B-cell follicles. In the

thymus, primarily expressed in the medulla on mature T-lymphocytes that have undergone thymic selection.

Background

Rabbit polyclonal antibody to CD172g

Images



Western blot analysis of CD172g expression in AML12 (A), PC12 (B), LO2 (C), HEK293T (D) whole cell lysates.

Please note: All products are 'FOR RESEARCH USE ONLY. NOT FOR USE IN DIAGNOSTIC OR THERAPEUTIC PROCEDURES'.