

Anti-Granuphilin Antibody

Catalog # AP53981

Product Information

Application	WB
Primary Accession	Q96C24
Reactivity	Human, Mouse, Rat
Host	Rabbit
Clonality	Polyclonal
Calculated MW	76024

Additional Information

Gene ID	94121
Other Names	Synaptotagmin-like protein 4; Exophilin-2; Granuphilin
Target/Specificity	Recognizes endogenous levels of Granuphilin protein.
Dilution	WB~~1/500 - 1/1000
Format	Liquid in 0.42% Potassium phosphate, 0.87% Sodium chloride, pH 7.3, 30% glycerol, and 0.09% (W/V) sodium azide.
Storage	Store at -20 °C.Stable for 12 months from date of receipt

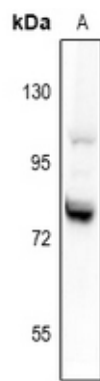
Protein Information

Name	SYTL4
Function	Modulates exocytosis of dense-core granules and secretion of hormones in the pancreas and the pituitary. Interacts with vesicles containing negatively charged phospholipids in a Ca(2+)-independent manner (By similarity).
Cellular Location	Membrane; Peripheral membrane protein. Cell membrane; Peripheral membrane protein. Cytoplasmic vesicle, secretory vesicle membrane; Peripheral membrane protein. Note=Detected close to the plasma membrane and on secretory granules. In pancreas, interacts with insulin-containing vesicles (By similarity)

Background

Rabbit polyclonal antibody to Granuphilin

Images



Western blot analysis of Granuphilin expression in CT26
(A) whole cell lysates.

Please note: All products are 'FOR RESEARCH USE ONLY. NOT FOR USE IN DIAGNOSTIC OR THERAPEUTIC PROCEDURES'.