

Anti-GPR151 Antibody

Catalog # AP53991

Product Information

Application	WB, IF
Primary Accession	Q8TDV0
Reactivity	Human, Rat
Host	Rabbit
Clonality	Polyclonal
Calculated MW	46637

Additional Information

Gene ID	134391
Other Names	PGR7; Probable G-protein coupled receptor 151; G-protein coupled receptor PGR7; GPCR-2037
Target/Specificity	Recognizes endogenous levels of GPR151 protein.
Dilution	WB~~1/500 - 1/1000 IF~~1/50 - 1/200
Format	Liquid in 0.42% Potassium phosphate, 0.87% Sodium chloride, pH 7.3, 30% glycerol, and 0.09% (W/V) sodium azide.
Storage	Store at -20 °C.Stable for 12 months from date of receipt

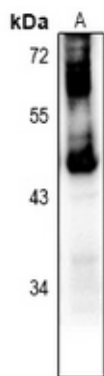
Protein Information

Name	GPR151
Synonyms	GALR4, GALRL {ECO:0000303 PubMed:1511101}
Function	Proton-sensing G-protein coupled receptor.
Cellular Location	Cell membrane; Multi-pass membrane protein
Tissue Location	High expression in the spinal cord.

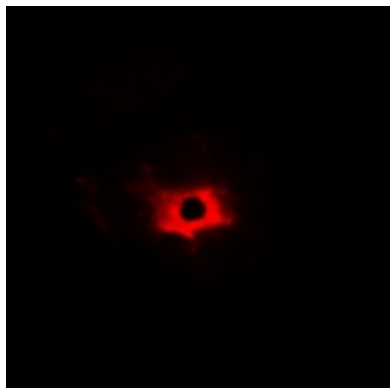
Background

Rabbit polyclonal antibody to GPR151

Images



Western blot analysis of GPR151 expression in rat lung (A) whole cell lysates.



Immunofluorescent analysis of GPR151 staining in HeLa cells. Formalin-fixed cells were permeabilized with 0.1% Triton X-100 in TBS for 5-10 minutes and blocked with 3% BSA-PBS for 30 minutes at room temperature. Cells were probed with the primary antibody in 3% BSA-PBS and incubated overnight at 4 °C in a humidified chamber. Cells were washed with PBST and incubated with Alexa Fluor 647-conjugated secondary antibody (red) in PBS at room temperature in the dark.

Please note: All products are 'FOR RESEARCH USE ONLY. NOT FOR USE IN DIAGNOSTIC OR THERAPEUTIC PROCEDURES'.