

Anti-Cytokeratin-5/6 Antibody

Catalog # AP53999

Product Information

Application	WB
Primary Accession	P13647
Other Accession	P02538 , P04259 , P48668
Reactivity	Human, Mouse, Rat
Host	Rabbit
Clonality	Polyclonal
Calculated MW	62378

Additional Information

Gene ID	3852
Other Names	Keratin type II cytoskeletal 5; 58 kDa cytokeratin; Cytokeratin-5; CK-5; Keratin-5; K5; Type-II keratin Kb5
Target/Specificity	Recognizes endogenous levels of Cytokeratin-5/6 protein.
Dilution	WB~~1/500 - 1/1000
Format	Liquid in 0.42% Potassium phosphate, 0.87% Sodium chloride, pH 7.3, 30% glycerol, and 0.09% (W/V) sodium azide.
Storage	Store at -20 °C.Stable for 12 months from date of receipt

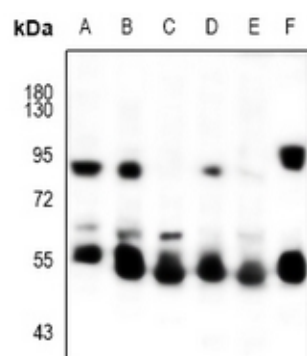
Protein Information

Name	KRT5
Function	Required for the formation of keratin intermediate filaments in the basal epidermis and maintenance of the skin barrier in response to mechanical stress (By similarity). Regulates the recruitment of Langerhans cells to the epidermis, potentially by modulation of the abundance of macrophage chemotactic cytokines, macrophage inflammatory cytokines and CTNND1 localization in keratinocytes (By similarity).
Cellular Location	Cytoplasm.
Tissue Location	Expressed in corneal epithelium (at protein level) (PubMed:26758872). Expressed in keratinocytes (at protein level) (PubMed:20128788, PubMed:31302245).

Background

Rabbit polyclonal antibody to Cytokeratin-5/6

Images



Western blot analysis of Cytokeratin-5/6 expression in A375 (A), EC9706 (B), Hela (C), MCF7 (D), PC3 (E), rat ovary (F) whole cell lysates.

Please note: All products are 'FOR RESEARCH USE ONLY. NOT FOR USE IN DIAGNOSTIC OR THERAPEUTIC PROCEDURES'.