

Anti-EMR3 Antibody

Catalog # AP54010

Product Information

Application	WB, IF
Primary Accession	Q9BY15
Reactivity	Human, Mouse, Rat
Host	Rabbit
Clonality	Polyclonal
Calculated MW	72621

Additional Information

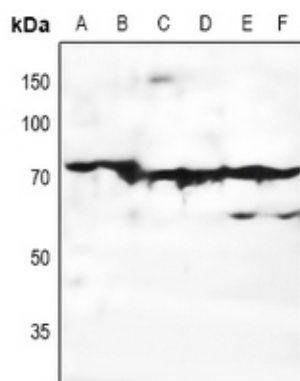
Gene ID	84658
Other Names	EGF-like module-containing mucin-like hormone receptor-like 3; EGF-like module receptor 3
Target/Specificity	KLH-conjugated synthetic peptide encompassing a sequence within the C-term region of human EMR3. The exact sequence is proprietary.
Dilution	WB~~1/500 - 1/1000 IF~~1/50 - 1/200
Format	Liquid in 0.42% Potassium phosphate, 0.87% Sodium chloride, pH 7.3, 30% glycerol, and 0.09% (W/V) sodium azide.
Storage	Store at -20 °C.Stable for 12 months from date of receipt

Protein Information

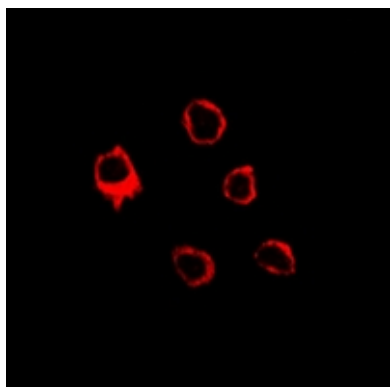
Name	ADGRE3 (HGNC:23647)
Synonyms	EMR3
Function	Orphan receptor that may play a role myeloid-myeloid interactions during immune and inflammatory responses. A ligand for the soluble form of this receptor is present at the surface of monocytes- derived macrophages and activated neutrophils.
Cellular Location	Cell membrane; Multi-pass membrane protein
Tissue Location	Displays a predominantly leukocyte-restricted expression, with highest levels in neutrophils, monocytes and macrophages.

Background

Images



Western blot analysis of EMR3 expression in HEK293T (A), H1975 (B), mouse liver (C), mouse kidney (D), rat liver (E), rat kidney (F) whole cell lysates.



Immunofluorescent analysis of EMR3 staining in LOVO cells. Formalin-fixed cells were permeabilized with 0.1% Triton X-100 in TBS for 5-10 minutes and blocked with 3% BSA-PBS for 30 minutes at room temperature. Cells were probed with the primary antibody in 3% BSA-PBS and incubated overnight at 4 °C in a humidified chamber. Cells were washed with PBST and incubated with Alexa Fluor 647-conjugated secondary antibody (red) in PBS at room temperature in the dark.

Please note: All products are 'FOR RESEARCH USE ONLY. NOT FOR USE IN DIAGNOSTIC OR THERAPEUTIC PROCEDURES'.