

Anti-CD1a/b Antibody

Catalog # AP54012

Product Information

Application	WB
Primary Accession	P06126
Other Accession	P29016
Reactivity	Human, Mouse, Rat
Host	Rabbit
Clonality	Polyclonal
Calculated MW	37077

Additional Information

Gene ID	909
Other Names	CD1A; T-cell surface glycoprotein CD1a; T-cell surface antigen T6/Leu-6; hTa1 thymocyte antigen; CD1a; CD1B; T-cell surface glycoprotein CD1b; CD1b
Target/Specificity	KLH-conjugated synthetic peptide encompassing a sequence within the center region of human CD1a/b. The exact sequence is proprietary.
Dilution	WB~~1/500 - 1/1000
Format	Liquid in 0.42% Potassium phosphate, 0.87% Sodium chloride, pH 7.3, 30% glycerol, and 0.09% (W/V) sodium azide.
Storage	Store at -20 °C.Stable for 12 months from date of receipt

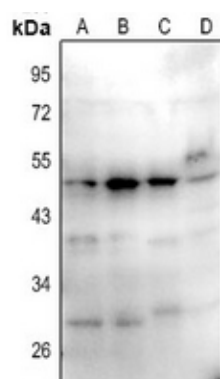
Protein Information

Name	CD1A
Function	Antigen-presenting protein that binds self and non-self lipid and glycolipid antigens and presents them to T-cell receptors on natural killer T-cells.
Cellular Location	Cell membrane; Single-pass type I membrane protein. Membrane raft; Single-pass type I membrane protein. Endosome membrane; Single- pass type I membrane protein. Note=Subject to intracellular trafficking between the cell membrane and endosomes (PubMed:11231314). Localizes to cell surface lipid rafts (PubMed:18178838).
Tissue Location	Expressed on cortical thymocytes, epidermal Langerhans cells, dendritic cells, on certain T-cell leukemias, and in various other tissues.

Background

Rabbit polyclonal antibody to CD1a/b

Images



Western blot analysis of CD1a/b expression in A375 (A), HepG2 (B), AML12 (C), C6 (D) whole cell lysates.

Please note: All products are 'FOR RESEARCH USE ONLY. NOT FOR USE IN DIAGNOSTIC OR THERAPEUTIC PROCEDURES'.