

Anti-Collagen-pan Antibody

Catalog # AP54015

Product Information

Application	WB
Primary Accession	P02452
Other Accession	P02458 , P02461 , P20908
Reactivity	Human, Mouse, Rat
Host	Rabbit
Clonality	Polyclonal
Calculated MW	138911

Additional Information

Gene ID	1277
Other Names	Collagen alpha-1(I) chain; Alpha-1 type I collagen; Collagen alpha-1(II) chain; Alpha-1 type II collagen; Collagen alpha-1(III) chain
Target/Specificity	KLH-conjugated synthetic peptide encompassing a sequence within the center region of human Collagen-pan. The exact sequence is proprietary.
Dilution	WB~~1/500 - 1/1000
Format	Liquid in 0.42% Potassium phosphate, 0.87% Sodium chloride, pH 7.3, 30% glycerol, and 0.09% (W/V) sodium azide.
Storage	Store at -20 °C.Stable for 12 months from date of receipt

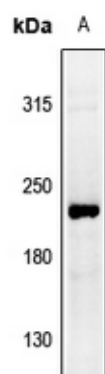
Protein Information

Name	COL1A1
Function	Type I collagen is a member of group I collagen (fibrillar forming collagen).
Cellular Location	Secreted, extracellular space, extracellular matrix {ECO:0000255 PROSITE-ProRule:PRU00793}
Tissue Location	Forms the fibrils of tendon, ligaments and bones. In bones the fibrils are mineralized with calcium hydroxyapatite

Background

Rabbit polyclonal antibody to Collagen-pan

Images



Western blot analysis of Collagen-pan expression in NIH3T3 (A) whole cell lysates.

Please note: All products are 'FOR RESEARCH USE ONLY. NOT FOR USE IN DIAGNOSTIC OR THERAPEUTIC PROCEDURES'.