

Anti-VEGF165 Antibody

Catalog # AP54020

Product Information

Application	WB
Primary Accession	P15692-4
Reactivity	Human, Mouse, Rat
Host	Rabbit
Clonality	Polyclonal

Additional Information

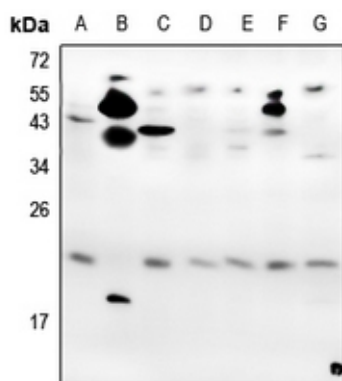
Other Names	VEGF; Vascular endothelial growth factor A; VEGF-A; Vascular permeability factor; VPF
Target/Specificity	KLH-conjugated synthetic peptide encompassing a sequence within the center region of human VEGF165. The exact sequence is proprietary.
Dilution	WB~~1/500 - 1/1000
Format	Liquid in 0.42% Potassium phosphate, 0.87% Sodium chloride, pH 7.3, 30% glycerol, and 0.09% (W/V) sodium azide.
Storage	Store at -20 °C.Stable for 12 months from date of receipt

Protein Information

Background

Rabbit polyclonal antibody to VEGF165

Images



Western blot analysis of VEGF165 expression in mouse embryo (A), rat brain (B), LO2 (C), Beas2B (D), A549 (E), Hela (F), SGC7901 (G) whole cell lysates.

Please note: All products are 'FOR RESEARCH USE ONLY. NOT FOR USE IN DIAGNOSTIC OR THERAPEUTIC PROCEDURES'.