

Anti-MED21 Antibody

Catalog # AP54024

Product Information

Application	WB
Primary Accession	Q13503
Reactivity	Human, Mouse
Host	Rabbit
Clonality	Polyclonal
Calculated MW	15564

Additional Information

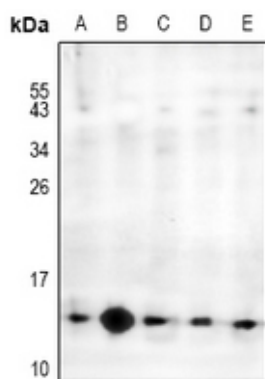
Gene ID	9412
Other Names	SRB7; SURB7; Mediator of RNA polymerase II transcription subunit 21; Mediator complex subunit 21; RNA polymerase II holoenzyme component SRB7; RNPAPII complex component SRB7; hSrb7
Target/Specificity	Recognizes endogenous levels of MED21 protein.
Dilution	WB~~1/500 - 1/1000
Format	Liquid in 0.42% Potassium phosphate, 0.87% Sodium chloride, pH 7.3, 30% glycerol, and 0.09% (W/V) sodium azide.
Storage	Store at -20 °C.Stable for 12 months from date of receipt

Protein Information

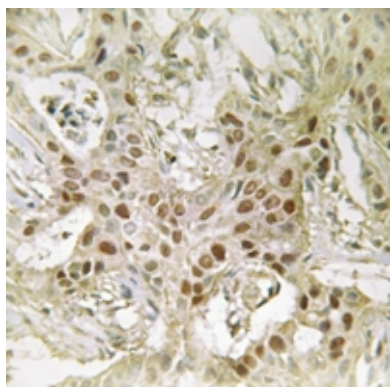
Name	MED21
Synonyms	SRB7, SURB7
Function	Component of the Mediator complex, a coactivator involved in the regulated transcription of nearly all RNA polymerase II-dependent genes. Mediator functions as a bridge to convey information from gene- specific regulatory proteins to the basal RNA polymerase II transcription machinery. Mediator is recruited to promoters by direct interactions with regulatory proteins and serves as a scaffold for the assembly of a functional preinitiation complex with RNA polymerase II and the general transcription factors.
Cellular Location	Nucleus.

Background

Images



Western blot analysis of MED21 expression in PC12 (A), CT26 (B), HEK293T (C), SGC7901 (D), HCT116 (E) whole cell lysates.



Immunohistochemical analysis of MED21 staining in human breast cancer formalin fixed paraffin embedded tissue section. The section was pre-treated using heat mediated antigen retrieval with sodium citrate buffer (pH 6.0). The section was then incubated with the antibody at room temperature and detected using an HRP conjugated compact polymer system. DAB was used as the chromogen. The section was then counterstained with haematoxylin and mounted with DPX.

Please note: All products are 'FOR RESEARCH USE ONLY. NOT FOR USE IN DIAGNOSTIC OR THERAPEUTIC PROCEDURES'.