

# Anti-CELSR3 Antibody

Catalog # AP54031

## Product Information

---

Application	WB, IF
Primary Accession	<a href="#">Q9NYQ7</a>
Reactivity	Human, Mouse
Host	Rabbit
Clonality	Polyclonal
Calculated MW	358185

## Additional Information

---

Gene ID	1951
Other Names	CDHF11; EGFL1; FMI1; KIAA0812; MEGF2; Cadherin EGF LAG seven-pass G-type receptor 3; Cadherin family member 11; Epidermal growth factor-like protein 1; EGF-like protein 1; Flamingo homolog 1; hFmi1; Multiple epidermal growth factor-like domains protein 2; Multiple EGF-like domains protein 2
Target/Specificity	Recognizes endogenous levels of CELSR3 protein.
Dilution	WB~~1/500 - 1/1000 IF~~1/50 - 1/200
Format	Liquid in 0.42% Potassium phosphate, 0.87% Sodium chloride, pH 7.3, 30% glycerol, and 0.09% (W/V) sodium azide.
Storage	Store at -20 °C.Stable for 12 months from date of receipt

## Protein Information

---

Name	CELSR3
Synonyms	CDHF11, EGFL1, FMI1, KIAA0812, MEGF2
Function	Receptor that may have an important role in cell/cell signaling during nervous system formation.
Cellular Location	Cell membrane; Multi-pass membrane protein.

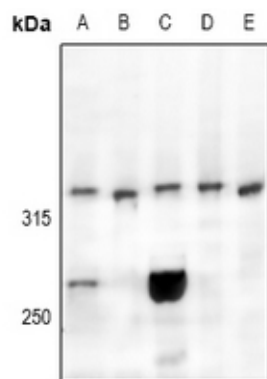
## Background

---

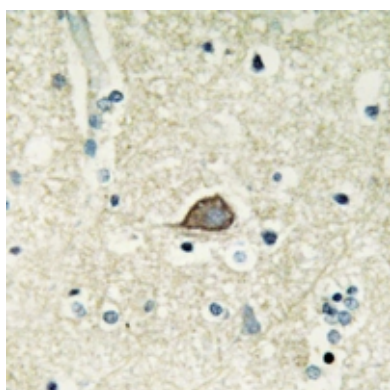
Rabbit polyclonal antibody to CELSR3

## Images

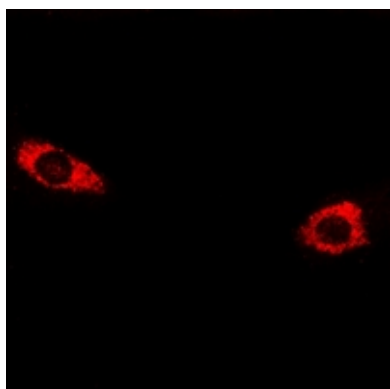
---



Western blot analysis of CELSR3 expression in K562 (A), MCF7 (B), C6 (C), 3T3L1 (D), U87MG (E) whole cell lysates.



Immunohistochemical analysis of CELSR3 staining in human brain formalin fixed paraffin embedded tissue section. The section was pre-treated using heat mediated antigen retrieval with sodium citrate buffer (pH 6.0). The section was then incubated with the antibody at room temperature and detected using an HRP conjugated compact polymer system. DAB was used as the chromogen. The section was then counterstained with haematoxylin and mounted with DPX.



Immunofluorescent analysis of CELSR3 staining in HepG2 cells. Formalin-fixed cells were permeabilized with 0.1% Triton X-100 in TBS for 5-10 minutes and blocked with 3% BSA-PBS for 30 minutes at room temperature. Cells were probed with the primary antibody in 3% BSA-PBS and incubated overnight at 4 °C in a humidified chamber. Cells were washed with PBST and incubated with a Alexa Fluor 594-conjugated secondary antibody (red) in PBS at room temperature in the dark.

Please note: All products are 'FOR RESEARCH USE ONLY. NOT FOR USE IN DIAGNOSTIC OR THERAPEUTIC PROCEDURES'.