

Anti-CEND1 Antibody

Catalog # AP54032

Product Information

| | |
|-------------------|------------------------|
| Application | WB |
| Primary Accession | Q8N111 |
| Reactivity | Human |
| Host | Rabbit |
| Clonality | Polyclonal |
| Calculated MW | 14954 |

Additional Information

| | |
|--------------------|--|
| Gene ID | 51286 |
| Other Names | BM88; Cell cycle exit and neuronal differentiation protein 1; BM88 antigen |
| Target/Specificity | KLH-conjugated synthetic peptide encompassing a sequence within the N-term region of human CEND1. The exact sequence is proprietary. |
| Dilution | WB~~1/500 - 1/1000 |
| Format | Liquid in 0.42% Potassium phosphate, 0.87% Sodium chloride, pH 7.3, 30% glycerol, and 0.09% (W/V) sodium azide. |
| Storage | Store at -20 °C.Stable for 12 months from date of receipt |

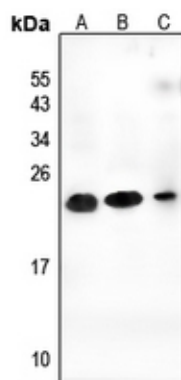
Protein Information

| | |
|-------------------|--|
| Name | CEND1 |
| Synonyms | BM88 |
| Function | Involved in neuronal differentiation. |
| Cellular Location | Membrane; Single-pass type IV membrane protein |
| Tissue Location | Neuron specific.. |

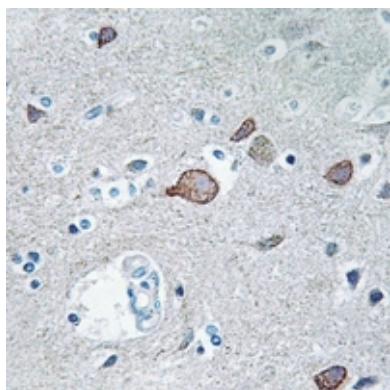
Background

Rabbit polyclonal antibody to CEND1

Images



Western blot analysis of CEND1 expression in U87MG (A), MCF7 (B), K562 (C) whole cell lysates.



Immunohistochemical analysis of CEND1 staining in human brain formalin fixed paraffin embedded tissue section. The section was pre-treated using heat mediated antigen retrieval with sodium citrate buffer (pH 6.0). The section was then incubated with the antibody at room temperature and detected using an HRP conjugated compact polymer system. DAB was used as the chromogen. The section was then counterstained with haematoxylin and mounted with DPX.

Please note: All products are 'FOR RESEARCH USE ONLY. NOT FOR USE IN DIAGNOSTIC OR THERAPEUTIC PROCEDURES'.