

Anti-IGFBP7 Antibody

Catalog # AP54034

Product Information

Application	WB
Primary Accession	Q16270
Reactivity	Human, Mouse, Rat
Host	Rabbit
Clonality	Polyclonal
Calculated MW	29130

Additional Information

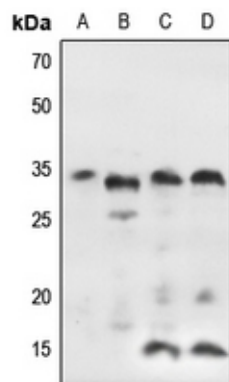
Gene ID	3490
Other Names	MAC25; PSF; Insulin-like growth factor-binding protein 7; IBP-7; IGF-binding protein 7; IGFBP-7; IGFBP-rP1; MAC25 protein; PGI2-stimulating factor; Prostacyclin-stimulating factor; Tumor-derived adhesion factor; TAF
Target/Specificity	KLH-conjugated synthetic peptide encompassing a sequence within the C-term region of human IGFBP7. The exact sequence is proprietary.
Dilution	WB~~1/500 - 1/1000
Format	Liquid in 0.42% Potassium phosphate, 0.87% Sodium chloride, pH 7.3, 30% glycerol, and 0.09% (W/V) sodium azide.
Storage	Store at -20 °C. Stable for 12 months from date of receipt

Protein Information

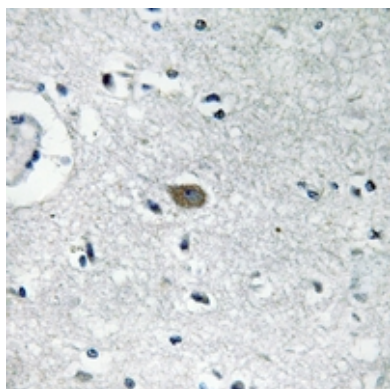
Name	IGFBP7
Synonyms	MAC25, PSF
Function	Binds IGF1 and IGF2 with a relatively low affinity. Stimulates prostacyclin (PGI2) production. Stimulates cell adhesion. Acts as a ligand for CD93 to play a role in angiogenesis (PubMed: 38218180).
Cellular Location	Secreted.

Background

Rabbit polyclonal antibody to IGFBP7



Western blot analysis of IGFBP7 expression in Hela (A), mouse lung (B), rat kidney (C), rat lung (D) whole cell lysates.



Immunohistochemical analysis of IGFBP7 staining in human brain formalin fixed paraffin embedded tissue section. The section was pre-treated using heat mediated antigen retrieval with sodium citrate buffer (pH 6.0). The section was then incubated with the antibody at room temperature and detected using an HRP conjugated compact polymer system. DAB was used as the chromogen. The section was then counterstained with haematoxylin and mounted with DPX.

Please note: All products are 'FOR RESEARCH USE ONLY. NOT FOR USE IN DIAGNOSTIC OR THERAPEUTIC PROCEDURES'.