

# Anti-MAL Antibody

Catalog # AP54042

## Product Information

---

<b>Application</b>	WB
<b>Primary Accession</b>	<a href="#">P21145</a>
<b>Reactivity</b>	Human, Mouse, Rat
<b>Host</b>	Rabbit
<b>Clonality</b>	Polyclonal
<b>Calculated MW</b>	16714

## Additional Information

---

<b>Gene ID</b>	4118
<b>Other Names</b>	Myelin and lymphocyte protein; T-lymphocyte maturation-associated protein
<b>Target/Specificity</b>	Recognizes endogenous levels of MAL protein.
<b>Dilution</b>	WB~~1/500 - 1/1000
<b>Format</b>	Liquid in 0.42% Potassium phosphate, 0.87% Sodium chloride, pH 7.3, 30% glycerol, and 0.09% (W/V) sodium azide.
<b>Storage</b>	Store at -20 °C.Stable for 12 months from date of receipt

## Protein Information

---

<b>Name</b>	MAL
<b>Function</b>	May be involved in vesicular trafficking from the Golgi apparatus to the cell membrane. Plays a role in the maintenance of the myelin sheath, and in axon-glia and glia-glia interactions.
<b>Cellular Location</b>	Membrane; Multi-pass membrane protein. Cell membrane. Note=Found in lipid rafts {ECO:0000250 UniProtKB:O09198}

## Background

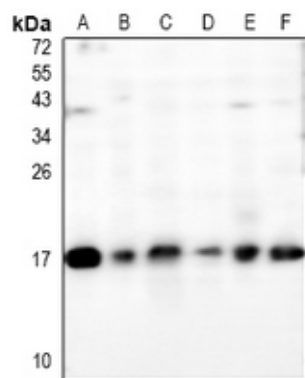
---

Rabbit polyclonal antibody to MAL

## Images

---

Western blot analysis of MAL expression in Myla2059 (A),



HuT78 (B), rat spleen (C), mouse spleen (D), AML12 (E), CT26 (F) whole cell lysates.

Please note: All products are 'FOR RESEARCH USE ONLY. NOT FOR USE IN DIAGNOSTIC OR THERAPEUTIC PROCEDURES'.