

Anti-CCL19 Antibody

Catalog # AP54050

Product Information

Application	WB
Primary Accession	Q99731
Reactivity	Human
Host	Rabbit
Clonality	Polyclonal
Calculated MW	10993

Additional Information

Gene ID	6363
Other Names	ELC; MIP3B; SCYA19; C-C motif chemokine 19; Beta-chemokine exodus-3; CK beta-11; Epstein-Barr virus-induced molecule 1 ligand chemokine; EBI1 ligand chemokine; ELC; Macrophage inflammatory protein 3 beta; MIP-3-beta; Small-inducible cytokine A19
Target/Specificity	KLH-conjugated synthetic peptide encompassing a sequence within the center region of human CCL19. The exact sequence is proprietary.
Dilution	WB~~1/500 - 1/1000
Format	Liquid in 0.42% Potassium phosphate, 0.87% Sodium chloride, pH 7.3, 30% glycerol, and 0.09% (W/V) sodium azide.
Storage	Store at -20 °C.Stable for 12 months from date of receipt

Protein Information

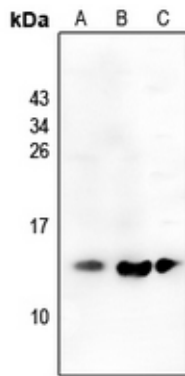
Name	CCL19
Synonyms	ELC, MIP3B, SCYA19
Function	May play a role not only in inflammatory and immunological responses but also in normal lymphocyte recirculation and homing. May play an important role in trafficking of T-cells in thymus, and T-cell and B-cell migration to secondary lymphoid organs. Binds to chemokine receptor CCR7. Recombinant CCL19 shows potent chemotactic activity for T-cells and B-cells but not for granulocytes and monocytes. Binds to atypical chemokine receptor ACKR4 and mediates the recruitment of beta- arrestin (ARRB1/2) to ACKR4.
Cellular Location	Secreted.
Tissue Location	Expressed at high levels in the lymph nodes, thymus and appendix.

Intermediate levels seen in colon and trachea, while low levels found in spleen, small intestine, lung, kidney and stomach

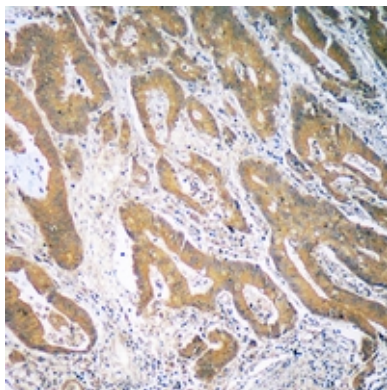
Background

Rabbit polyclonal antibody to CCL19

Images



Western blot analysis of CCL19 expression in LOVO (A), HCT116 (B), K562 (C) whole cell lysates.



Immunohistochemical analysis of CCL19 staining in human colon cancer formalin fixed paraffin embedded tissue section. The section was pre-treated using heat mediated antigen retrieval with sodium citrate buffer (pH 6.0). The section was then incubated with the antibody at room temperature and detected using an HRP conjugated compact polymer system. DAB was used as the chromogen. The section was then counterstained with haematoxylin and mounted with DPX.

Please note: All products are 'FOR RESEARCH USE ONLY. NOT FOR USE IN DIAGNOSTIC OR THERAPEUTIC PROCEDURES'.