

# Anti-NIP45 Antibody

Catalog # AP54054

## Product Information

---

<b>Application</b>	WB
<b>Primary Accession</b>	<a href="#">Q8NCF5</a>
<b>Reactivity</b>	Human, Mouse, Rat
<b>Host</b>	Rabbit
<b>Clonality</b>	Polyclonal
<b>Calculated MW</b>	45817

## Additional Information

---

<b>Gene ID</b>	84901
<b>Other Names</b>	NIP45; NFATC2-interacting protein; 45 kDa NF-AT-interacting protein; 45 kDa NFAT-interacting protein; Nuclear factor of activated T-cells cytoplasmic 2-interacting protein
<b>Target/Specificity</b>	KLH-conjugated synthetic peptide encompassing a sequence within the center region of human NIP45. The exact sequence is proprietary.
<b>Dilution</b>	WB~~1/500 - 1/1000
<b>Format</b>	Liquid in 0.42% Potassium phosphate, 0.87% Sodium chloride, pH 7.3, 30% glycerol, and 0.09% (W/V) sodium azide.
<b>Storage</b>	Store at -20 °C.Stable for 12 months from date of receipt

## Protein Information

---

<b>Name</b>	NFATC2IP
<b>Synonyms</b>	NIP45
<b>Function</b>	In T-helper 2 (Th2) cells, regulates the magnitude of NFAT- driven transcription of a specific subset of cytokine genes, including IL3, IL4, IL5 and IL13, but not IL2. Recruits PRMT1 to the IL4 promoter; this leads to enhancement of histone H4 'Arg-3'-methylation and facilitates subsequent histone acetylation at the IL4 locus, thus promotes robust cytokine expression (By similarity). Down-regulates formation of poly-SUMO chains by UBE2I/UBC9 (By similarity).
<b>Cellular Location</b>	Nucleus. Cytoplasm. Note=TRAF1 is associated with a fraction of NFATC2IP in the cytoplasm and prevents its translocation to the nucleus.

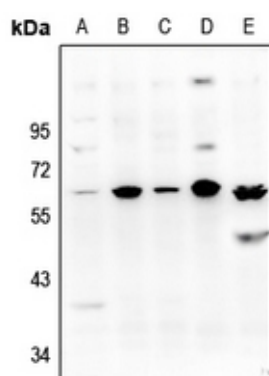
## Background

---

Rabbit polyclonal antibody to NIP45

## Images

---



Western blot analysis of NIP45 expression in Hela (A), HEK293T (B), MCF7 (C), SP20 (D), C6 (E) whole cell lysates.

Please note: All products are 'FOR RESEARCH USE ONLY. NOT FOR USE IN DIAGNOSTIC OR THERAPEUTIC PROCEDURES'.