

Anti-CCDC109A Antibody

Catalog # AP54071

Product Information

Application	WB
Primary Accession	Q8NE86
Reactivity	Human, Mouse, Rat
Host	Rabbit
Clonality	Polyclonal
Calculated MW	39867

Additional Information

Gene ID	90550
Other Names	C10orf42; CCDC109A; Calcium uniporter protein mitochondrial; Coiled-coil domain-containing protein 109A
Target/Specificity	KLH-conjugated synthetic peptide encompassing a sequence within the center region of human CCDC109A. The exact sequence is proprietary.
Dilution	WB~~1/500 - 1/1000
Format	Liquid in 0.42% Potassium phosphate, 0.87% Sodium chloride, pH 7.3, 30% glycerol, and 0.09% (W/V) sodium azide.
Storage	Store at -20 °C.Stable for 12 months from date of receipt

Protein Information

Name	MCU {ECO:0000303 PubMed:21685886, ECO:0000312 HGNC:HGNC:23526}
Function	<p>Channel-forming and calcium-conducting subunit of the mitochondrial inner membrane calcium uniporter complex (uniporter), which mediates calcium uptake into the mitochondrial matrix (PubMed:21685886, PubMed:21685888, PubMed:22822213, PubMed:22829870, PubMed:22904319, PubMed:23101630, PubMed:23178883, PubMed:23755363, PubMed:24332854, PubMed:24560927, PubMed:26341627, PubMed:29954988, PubMed:29995857, PubMed:30454562, PubMed:30638448, PubMed:31080062, PubMed:32494073, PubMed:32762847, PubMed:33296646, PubMed:37036971, PubMed:37126688). MCU channel activity is regulated by the calcium-sensor subunits of the uniporter MICU1 and MICU2 (or MICU3) (PubMed:24560927, PubMed:26903221, PubMed:30454562, PubMed:30638448, PubMed:32494073, PubMed:32762847, PubMed:37036971, PubMed:37126688). Mitochondrial calcium homeostasis plays key roles in cellular physiology and regulates ATP production, cytoplasmic calcium signals</p>

and activation of cell death pathways (PubMed:[21685886](#), PubMed:[21685888](#), PubMed:[22822213](#), PubMed:[22829870](#), PubMed:[22904319](#), PubMed:[23101630](#), PubMed:[23178883](#), PubMed:[23755363](#), PubMed:[24332854](#), PubMed:[24560927](#), PubMed:[26341627](#), PubMed:[29954988](#), PubMed:[32494073](#), PubMed:[32762847](#)). Involved in buffering the amplitude of systolic calcium rises in cardiomyocytes (PubMed:[22822213](#)). While dispensable for baseline homeostatic cardiac function, acts as a key regulator of short-term mitochondrial calcium loading underlying a 'fight-or-flight' response during acute stress: acts by mediating a rapid increase of mitochondrial calcium in pacemaker cells (PubMed:[25603276](#)). Participates in mitochondrial permeability transition during ischemia-reperfusion injury (By similarity). Mitochondrial calcium uptake in skeletal muscle cells is involved in muscle size in adults (By similarity). Regulates synaptic vesicle endocytosis kinetics in central nerve terminal (By similarity). Regulates glucose-dependent insulin secretion in pancreatic beta-cells by regulating mitochondrial calcium uptake (PubMed:[22829870](#), PubMed:[22904319](#)). Involved in antigen processing and presentation (By similarity).

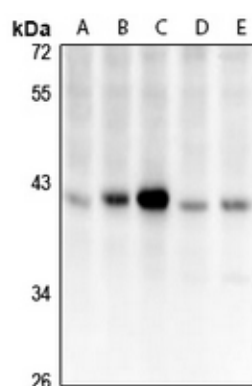
Cellular Location

Mitochondrion inner membrane; Multi-pass membrane protein

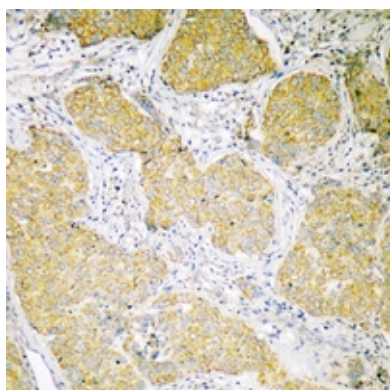
Background

Rabbit polyclonal antibody to CCDC109A

Images



Western blot analysis of CCDC109A expression in BV2 (A), PC12 (B), HCT116 (C), HEK293T (D), Panc1 (E) whole cell lysates.



Immunohistochemical analysis of CCDC109A staining in human breast cancer formalin fixed paraffin embedded tissue section. The section was pre-treated using heat mediated antigen retrieval with sodium citrate buffer (pH 6.0). The section was then incubated with the antibody at room temperature and detected using an HRP conjugated compact polymer system. DAB was used as the chromogen. The section was then counterstained with haematoxylin and mounted with DPX.

Please note: All products are 'FOR RESEARCH USE ONLY. NOT FOR USE IN DIAGNOSTIC OR THERAPEUTIC PROCEDURES'.