

Anti-CCS Antibody

Catalog # AP54072

Product Information

Application	WB
Primary Accession	O14618
Reactivity	Human, Mouse, Rat
Host	Rabbit
Clonality	Polyclonal
Calculated MW	29041

Additional Information

Gene ID	9973
Other Names	Copper chaperone for superoxide dismutase; Superoxide dismutase copper chaperone
Target/Specificity	Recognizes endogenous levels of CCS protein.
Dilution	WB~~1/500 - 1/1000
Format	Liquid in 0.42% Potassium phosphate, 0.87% Sodium chloride, pH 7.3, 30% glycerol, and 0.09% (W/V) sodium azide.
Storage	Store at -20 °C.Stable for 12 months from date of receipt

Protein Information

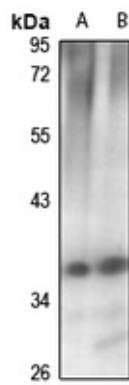
Name	CCS (HGNC:1613)
Function	Delivers copper to copper zinc superoxide dismutase (SOD1).
Cellular Location	Cytoplasm.
Tissue Location	Ubiquitous.

Background

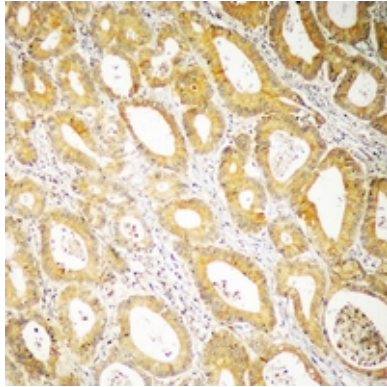
Rabbit polyclonal antibody to CCS

Images

Western blot analysis of CCS expression in mouse testis



(A), rat kidney (B) whole cell lysates.



Immunohistochemical analysis of CCS staining in human colon cancer formalin fixed paraffin embedded tissue section. The section was pre-treated using heat mediated antigen retrieval with sodium citrate buffer (pH 6.0). The section was then incubated with the antibody at room temperature and detected using an HRP conjugated compact polymer system. DAB was used as the chromogen. The section was then counterstained with haematoxylin and mounted with DPX.

Please note: All products are 'FOR RESEARCH USE ONLY. NOT FOR USE IN DIAGNOSTIC OR THERAPEUTIC PROCEDURES'.