

Anti-GAS1 Antibody

Catalog # AP54073

Product Information

Application	WB
Primary Accession	P54826
Reactivity	Human, Mouse, Rat
Host	Rabbit
Clonality	Polyclonal
Calculated MW	35693

Additional Information

Gene ID	2619
Other Names	Growth arrest-specific protein 1; GAS-1
Target/Specificity	KLH-conjugated synthetic peptide encompassing a sequence within the C-term region of human GAS1. The exact sequence is proprietary.
Dilution	WB~~1/500 - 1/1000
Format	Liquid in 0.42% Potassium phosphate, 0.87% Sodium chloride, pH 7.3, 30% glycerol, and 0.09% (W/V) sodium azide.
Storage	Store at -20 °C.Stable for 12 months from date of receipt

Protein Information

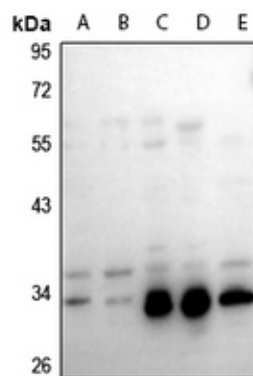
Name	GAS1
Function	Specific growth arrest protein involved in growth suppression. Blocks entry to S phase. Prevents cycling of normal and transformed cells. Binds 20(S)-hydroxycholesterol (20(S)-OHC) (By similarity).
Cellular Location	Cell membrane; Lipid-anchor, GPI- anchor

Background

Rabbit polyclonal antibody to GAS1

Images

Western blot analysis of GAS1 expression in SGC7901 (A),



A375 (B), HeLa (C), PC12 (D), MEF (E) whole cell lysates.

Please note: All products are 'FOR RESEARCH USE ONLY. NOT FOR USE IN DIAGNOSTIC OR THERAPEUTIC PROCEDURES'.