

Anti-SLM2 Antibody

Catalog # AP54075

Product Information

Application	WB
Primary Accession	O75525
Reactivity	Human, Mouse
Host	Rabbit
Clonality	Polyclonal
Calculated MW	38800

Additional Information

Gene ID	10656
Other Names	SALP; SLM2; KH domain-containing RNA-binding signal transduction-associated protein 3; RNA-binding protein T-Star; Sam68-like mammalian protein 2; SLM-2; Sam68-like phosphotyrosine protein
Target/Specificity	KLH-conjugated synthetic peptide encompassing a sequence within the N-term region of human SLM2. The exact sequence is proprietary.
Dilution	WB~~1/500 - 1/1000
Format	Liquid in 0.42% Potassium phosphate, 0.87% Sodium chloride, pH 7.3, 30% glycerol, and 0.09% (W/V) sodium azide.
Storage	Store at -20 °C.Stable for 12 months from date of receipt

Protein Information

Name	KHDRBS3
Synonyms	SALP, SLM2
Function	RNA-binding protein that plays a role in the regulation of alternative splicing and influences mRNA splice site selection and exon inclusion. Binds preferentially to the 5'-[AU]UAAA-3' motif in vitro. Binds optimally to RNA containing 5'-[AU]UAA-3' as a bipartite motif spaced by more than 15 nucleotides. Binds poly(A). RNA-binding abilities are down-regulated by tyrosine kinase PTK6 (PubMed: 10564820 , PubMed: 19561594 , PubMed: 26758068). Involved in splice site selection of vascular endothelial growth factor (PubMed: 15901763). In vitro regulates CD44 alternative splicing by direct binding to purine-rich exonic enhancer (By similarity). Can regulate alternative splicing of neurexins NRXN1-3 in the laminin G-like domain 6 containing the evolutionary conserved neurexin alternative spliced segment 4 (AS4) involved in neurexin selective targeting to postsynaptic partners such as

neuroligins and LRRTM family members (PubMed:[26758068](#)). Targeted, cell-type specific splicing regulation of NRXN1 at AS4 is involved in neuronal glutamatergic synapse function and plasticity (By similarity). May regulate expression of KHDRBS2/SLIM-1 in defined brain neuron populations by modifying its alternative splicing (By similarity). Can bind FABP9 mRNA (By similarity). May play a role as a negative regulator of cell growth. Inhibits cell proliferation.

Cellular Location

Nucleus. Note=Localized in a compartment adjacent to the nucleolus, but distinct from the peri-nucleolar one

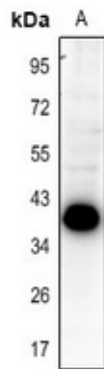
Tissue Location

Ubiquitous with higher expression in testis, skeletal muscle and brain. Expressed in the kidney only in podocytes, the glomerular epithelial cells of the kidney. Strongly expressed after meiosis.

Background

Rabbit polyclonal antibody to SLM2

Images



Western blot analysis of SLM2 expression in mouse brain (A) whole cell lysates.

Please note: All products are 'FOR RESEARCH USE ONLY. NOT FOR USE IN DIAGNOSTIC OR THERAPEUTIC PROCEDURES'.