

Anti-NHE7 Antibody

Catalog # AP54079

Product Information

Application	WB
Primary Accession	Q96T83
Reactivity	Human, Mouse
Host	Rabbit
Clonality	Polyclonal
Calculated MW	80131

Additional Information

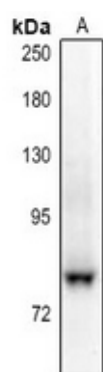
Gene ID	84679
Other Names	NHE7; Sodium/hydrogen exchanger 7; Na(+)/H(+) exchanger 7; NHE-7; Solute carrier family 9 member 7
Target/Specificity	KLH-conjugated synthetic peptide encompassing a sequence within the C-term region of human NHE7. The exact sequence is proprietary.
Dilution	WB~~1/500 - 1/1000
Format	Liquid in 0.42% Potassium phosphate, 0.87% Sodium chloride, pH 7.3, 30% glycerol, and 0.09% (W/V) sodium azide.
Storage	Store at -20 °C.Stable for 12 months from date of receipt

Protein Information

Name	SLC9A7
Synonyms	NHE7
Function	Golgi Na(+), K(+)/(H+) antiporter. Mediates the electoneutral influx of Na(+) or K(+) in exchange for H(+). May contribute to the regulation of Golgi apparatus volume and pH.
Cellular Location	Golgi apparatus, trans-Golgi network membrane; Multi-pass membrane protein. Recycling endosome membrane; Multi-pass membrane protein. Cell membrane; Multi-pass membrane protein
Tissue Location	Ubiquitously expressed.

Background

Images



Western blot analysis of NHE7 expression in mouse brain (A) whole cell lysates.

Please note: All products are 'FOR RESEARCH USE ONLY. NOT FOR USE IN DIAGNOSTIC OR THERAPEUTIC PROCEDURES'.