

# Anti-PTGIS Antibody

Catalog # AP54081

## Product Information

---

Application	WB
Primary Accession	<a href="#">Q16647</a>
Reactivity	Human, Mouse, Rat
Host	Rabbit
Clonality	Polyclonal
Calculated MW	57104

## Additional Information

---

Gene ID	5740
Other Names	CYP8; CYP8A1; Prostacyclin synthase; Prostaglandin I2 synthase
Target/Specificity	Recognizes endogenous levels of PTGIS protein.
Dilution	WB~~1/500 - 1/1000
Format	Liquid in 0.42% Potassium phosphate, 0.87% Sodium chloride, pH 7.3, 30% glycerol, and 0.09% (W/V) sodium azide.
Storage	Store at -20 °C.Stable for 12 months from date of receipt

## Protein Information

---

Name	PTGIS
Synonyms	CYP8, CYP8A1
Function	Catalyzes the biosynthesis and metabolism of eicosanoids. Catalyzes the isomerization of prostaglandin H2 to prostacyclin (= prostaglandin I2), a potent mediator of vasodilation and inhibitor of platelet aggregation (PubMed: <a href="#">12372404</a> , PubMed: <a href="#">15115769</a> , PubMed: <a href="#">18032380</a> , PubMed: <a href="#">25623425</a> ). Additionally, displays dehydratase activity, toward hydroperoxyeicosatetraenoates (HPETEs), especially toward (15S)-hydroperoxy-(5Z,8Z,11Z,13E)-eicosatetraenoate (15(S)- HPETE) (PubMed: <a href="#">17459323</a> ).
Cellular Location	Endoplasmic reticulum membrane {ECO:0000250 UniProtKB:Q29626}; Single-pass membrane protein
Tissue Location	Widely expressed; particularly abundant in ovary, heart, skeletal muscle, lung and prostate

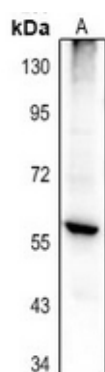
## Background

---

Rabbit polyclonal antibody to PTGIS

## Images

---



Western blot analysis of PTGIS expression in rat prostate (A) whole cell lysates.

Please note: All products are 'FOR RESEARCH USE ONLY. NOT FOR USE IN DIAGNOSTIC OR THERAPEUTIC PROCEDURES'.