

Anti-Actin-pan (AcK52/50/51) Antibody

Catalog # AP54090

Product Information

Application	WB
Primary Accession	P62736
Other Accession	P60709 , P68032 , P63261 , P63267 , P68133
Reactivity	Human, Mouse, Rat
Host	Rabbit
Clonality	Polyclonal
Calculated MW	42009

Additional Information

Gene ID	59
Other Names	ACTA2; ACTSA; ACTVS; GIG46; Actin aortic smooth muscle; Alpha-actin-2; Cell growth-inhibiting gene 46 protein; ACTB; Actin cytoplasmic 1; Beta-actin; ACTC1; ACTC; Actin alpha cardiac muscle 1; Alpha-cardiac actin; ACTG1; ACTB; ACTG; Actin cytoplasmic 2; Gamma-actin; ACTG2; ACTA3; ACTL3; ACTSG; Actin gamma-enteric smooth muscle; Alpha-actin-3; Gamma-2-actin; Smooth muscle gamma-actin; ACTA1; ACTA; Actin alpha skeletal muscle; Alpha-actin-1
Target/Specificity	Recognizes endogenous levels of Actin-pan (AcK52/50/51) protein.
Dilution	WB~~1/500 - 1/1000
Format	Liquid in 0.42% Potassium phosphate, 0.87% Sodium chloride, pH 7.3, 30% glycerol, and 0.09% (W/V) sodium azide.
Storage	Store at -20 °C.Stable for 12 months from date of receipt

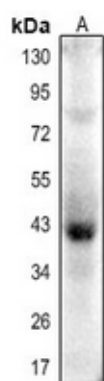
Protein Information

Name	ACTA2
Synonyms	ACTSA, ACTVS
Function	Actins are highly conserved proteins that are involved in various types of cell motility and are ubiquitously expressed in all eukaryotic cells.
Cellular Location	Cytoplasm, cytoskeleton.

Background

Rabbit polyclonal antibody to Actin-pan (AcK52/50/51)

Images



Western blot analysis of Actin-pan (AcK52/50/51) expression in mouse muscle (A) whole cell lysates.

Please note: All products are 'FOR RESEARCH USE ONLY. NOT FOR USE IN DIAGNOSTIC OR THERAPEUTIC PROCEDURES'.