

Anti-HPC2 Antibody

Catalog # AP54095

Product Information

Application	WB
Primary Accession	Q9BQ52
Reactivity	Human
Host	Rabbit
Clonality	Polyclonal
Calculated MW	92219

Additional Information

Gene ID	60528
Other Names	HPC2; Zinc phosphodiesterase ELAC protein 2; Elac homolog protein 2; Heredity prostate cancer protein 2; Ribonuclease Z 2; RNase Z 2; tRNA 3 endonuclease 2; tRNase Z 2
Target/Specificity	KLH-conjugated synthetic peptide encompassing a sequence within the center region of human HPC2. The exact sequence is proprietary.
Dilution	WB~~1/500 - 1/1000
Format	Liquid in 0.42% Potassium phosphate, 0.87% Sodium chloride, pH 7.3, 30% glycerol, and 0.09% (W/V) sodium azide.
Storage	Store at -20 °C.Stable for 12 months from date of receipt

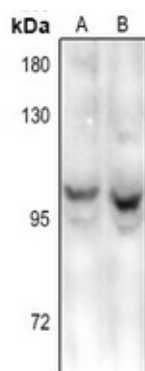
Protein Information

Name	ELAC2
Synonyms	HPC2
Function	Zinc phosphodiesterase, which displays mitochondrial tRNA 3'- processing endonuclease activity. Involved in tRNA maturation, by removing a 3'-trailer from precursor tRNA (PubMed: 21593607). Associates with mitochondrial DNA complexes at the nucleoids to initiate RNA processing and ribosome assembly (PubMed: 24703694).
Cellular Location	Mitochondrion. Mitochondrion matrix, mitochondrion nucleoid. Nucleus Note=Mainly mitochondrial
Tissue Location	Widely expressed. Highly expressed in heart, placenta, liver, skeletal muscle, kidney, pancreas, testis and ovary Weakly expressed in brain, lung, spleen, thymus, prostate, small intestine, colon and leukocytes.

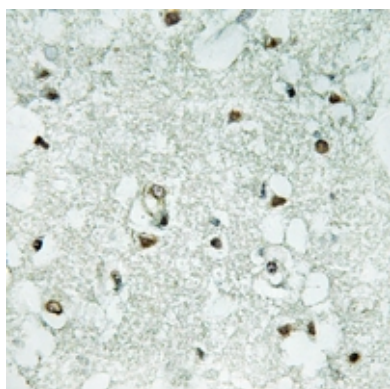
Background

Rabbit polyclonal antibody to HPC2

Images



Western blot analysis of HPC2 expression in Panc1 (A), HEK293T (B) whole cell lysates.



Immunohistochemical analysis of HPC2 staining in human brain formalin fixed paraffin embedded tissue section. The section was pre-treated using heat mediated antigen retrieval with sodium citrate buffer (pH 6.0). The section was then incubated with the antibody at room temperature and detected using an HRP conjugated compact polymer system. DAB was used as the chromogen. The section was then counterstained with haematoxylin and mounted with DPX.

Please note: All products are 'FOR RESEARCH USE ONLY. NOT FOR USE IN DIAGNOSTIC OR THERAPEUTIC PROCEDURES'.