

# Anti-CCL18 Antibody

Catalog # AP54103

## Product Information

---

Application	WB
Primary Accession	<a href="#">P55774</a>
Reactivity	Human, Mouse, Rat
Host	Rabbit
Clonality	Polyclonal
Calculated MW	9849

## Additional Information

---

Gene ID	6362
Other Names	AMAC1; DCCK1; MIP4; PARC; SCYA18; C-C motif chemokine 18; Alternative macrophage activation-associated CC chemokine 1; AMAC-1; CC chemokine PARC; Dendritic cell chemokine 1; DC-CK1; Macrophage inflammatory protein 4; MIP-4; Pulmonary and activation-regulated chemokine; Small-inducible cytokine A18
Target/Specificity	Recognizes endogenous levels of CCL18 protein.
Dilution	WB~~1/500 - 1/1000
Format	Liquid in 0.42% Potassium phosphate, 0.87% Sodium chloride, pH 7.3, 30% glycerol, and 0.09% (W/V) sodium azide.
Storage	Store at -20 °C.Stable for 12 months from date of receipt

## Protein Information

---

Name	CCL18
Synonyms	AMAC1, DCCK1, MIP4, PARC, SCYA18
Function	Chemotactic factor that attracts lymphocytes but not monocytes or granulocytes. May be involved in B-cell migration into B- cell follicles in lymph nodes. Attracts naive T-lymphocytes toward dendritic cells and activated macrophages in lymph nodes, has chemotactic activity for naive T-cells, CD4+ and CD8+ T-cells and thus may play a role in both humoral and cell-mediated immunity responses.
Cellular Location	Secreted.
Tissue Location	Expressed at high levels in lung, lymph nodes, placenta, bone marrow, dendritic cells present in germinal centers and T-cell areas of secondary

lymphoid organs and macrophages derived from peripheral blood monocytes. Not expressed by peripheral blood monocytes and a monocyte-to-macrophage differentiation is a prerequisite for expression. Expressed in synovial fluids from patients with rheumatoid and septic arthritis and in ovarian carcinoma ascitic fluid

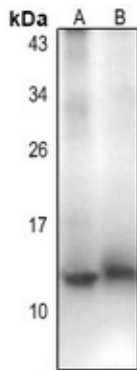
## Background

---

Rabbit polyclonal antibody to CCL18

## Images

---



Western blot analysis of CCL18 expression in mouse embryo (A), rat lung (B) whole cell lysates.

Please note: All products are 'FOR RESEARCH USE ONLY. NOT FOR USE IN DIAGNOSTIC OR THERAPEUTIC PROCEDURES'.