

Anti-TCEAL3/5/6 Antibody

Catalog # AP54122

Product Information

Application	WB, IHC
Primary Accession	Q969E4
Other Accession	Q5H9L2 , Q6IPX3
Reactivity	Human, Mouse
Host	Rabbit
Clonality	Polyclonal
Calculated MW	22502

Additional Information

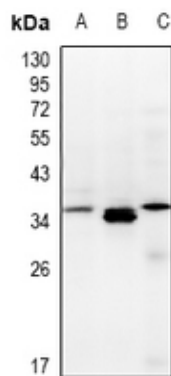
Gene ID	85012
Other Names	TCEAL3; MSTP072; Transcription elongation factor A protein-like 3; TCEA-like protein 3; Transcription elongation factor S-II protein-like 3; TCEAL5; Transcription elongation factor A protein-like 5; TCEA-like protein 5; Transcription elongation factor S-II protein-like 5; TCEAL6; Transcription elongation factor A protein-like 6; TCEA-like protein 6; Transcription elongation factor S-II protein-like 6
Target/Specificity	KLH-conjugated synthetic peptide encompassing a sequence within the C-term region of human TCEAL3/5/6. The exact sequence is proprietary.
Dilution	WB~~1/500 - 1/1000 IHC~~1:100~500
Format	Liquid in 0.42% Potassium phosphate, 0.87% Sodium chloride, pH 7.3, 30% glycerol, and 0.09% (W/V) sodium azide.
Storage	Store at -20 °C.Stable for 12 months from date of receipt

Protein Information

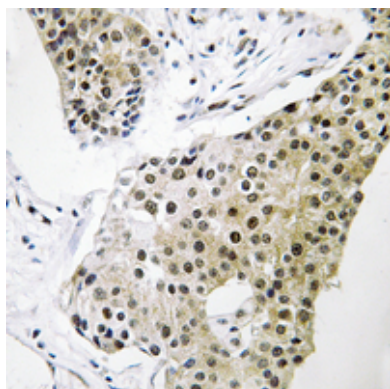
Name	TCEAL3
Function	May be involved in transcriptional regulation.
Cellular Location	Nucleus.

Background

Rabbit polyclonal antibody to TCEAL3/5/6



Western blot analysis of TCEAL3/5/6 expression in LOVO (A), Panc1 (B), mouse pancreas (C) whole cell lysates.



Immunohistochemical analysis of TCEAL3/5/6 staining in human breast cancer formalin fixed paraffin embedded tissue section. The section was pre-treated using heat mediated antigen retrieval with sodium citrate buffer (pH 6.0). The section was then incubated with the antibody at room temperature and detected using an HRP conjugated compact polymer system.

Please note: All products are 'FOR RESEARCH USE ONLY. NOT FOR USE IN DIAGNOSTIC OR THERAPEUTIC PROCEDURES'.