

# Anti-Cytokeratin 6 Antibody

Catalog # AP54133

## Product Information

---

Application	WB
Primary Accession	<a href="#">P02538</a>
Other Accession	<a href="#">P04259</a> , <a href="#">P48668</a>
Reactivity	Human
Host	Mouse
Clonality	Monoclonal
Calculated MW	60045

## Additional Information

---

Gene ID	3853
Other Names	KRT6A; K6A; KRT6D; Keratin type II cytoskeletal 6A; Cytokeratin-6A; CK-6A; Cytokeratin-6D; CK-6D; Keratin-6A; K6A; Type-II keratin Kb6; allergen Hom s 5; KRT6B; K6B; KRTL1; Keratin type II cytoskeletal 6B; Cytokeratin-6B; CK-6B; Keratin-6B; K6B; Type-II keratin Kb10; KRT6C; KRT6E; Keratin type II cytoskeletal 6C; Cytokeratin-6C; CK-6C; Cytokeratin-6E; CK-6E; Keratin K6h; Keratin-6C; K6C; Type-II keratin Kb12
Target/Specificity	Recognizes endogenous levels of Cytokeratin 6 protein.
Dilution	WB~~1/1000 - 1/2000
Format	Liquid in 0.42% Potassium phosphate, 0.87% Sodium chloride, pH 7.3, 30% glycerol, and 0.09% (W/V) sodium azide.
Storage	Store at -20 °C.Stable for 12 months from date of receipt

## Protein Information

---

Name	KRT6A
Synonyms	K6A, KRT6D
Function	Epidermis-specific type I keratin involved in wound healing. Involved in the activation of follicular keratinocytes after wounding, while it does not play a major role in keratinocyte proliferation or migration. Participates in the regulation of epithelial migration by inhibiting the activity of SRC during wound repair.
Tissue Location	Expressed in the corneal epithelium (at protein level).

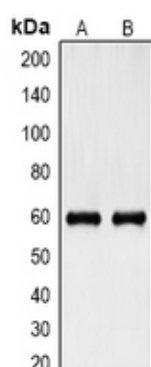
## Background

---

Mouse monoclonal antibody to Cytokeratin 6

## Images

---



Western blot analysis of Cytokeratin 6 expression in HeLa (A), HepG2 (B) whole cell lysates.

Please note: All products are 'FOR RESEARCH USE ONLY. NOT FOR USE IN DIAGNOSTIC OR THERAPEUTIC PROCEDURES'.