

Anti-CG alpha Antibody

Catalog # AP54138

Product Information

Primary Accession	P01215
Reactivity	Human
Host	Mouse
Clonality	Monoclonal
Calculated MW	13075

Additional Information

Gene ID	1081
Other Names	Glycoprotein hormones alpha chain; Anterior pituitary glycoprotein hormones common subunit alpha; Choriogonadotropin alpha chain; Chorionic gonadotrophin subunit alpha; CG-alpha; Follicle-stimulating hormone alpha chain; FSH-alpha; Follicle-stimulating hormone alpha chain; Luteinizing hormone alpha chain; LSH-alpha; Lutropin alpha chain; Thyroid-stimulating hormone alpha chain; TSH-alpha; Thyrotropin alpha chain
Target/Specificity	Recognizes endogenous levels of CG alpha protein.
Format	Mouse IgG. Liquid in PBS containing 50% glycerol, 0.2% BSA and 0.09% (W/V) sodium azide.
Storage	Store at -20 °C. Stable for 12 months from date of receipt

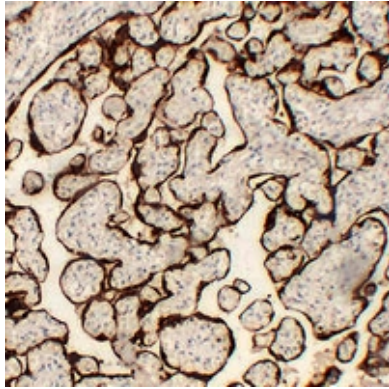
Protein Information

Name	CGA
Function	Shared alpha chain of the active heterodimeric glycoprotein hormones thyrotropin/thyroid stimulating hormone/TSH, lutropin/luteinizing hormone/LH, follitropin/follicle stimulating hormone/FSH and choriogonadotropin/CG. These hormones bind specific receptors on target cells that in turn activate downstream signaling pathways.
Cellular Location	Secreted

Background

Mouse monoclonal antibody to CG alpha

Images



Immunohistochemical analysis of CG alpha staining in human placenta formalin fixed paraffin embedded tissue section. The section was pre-treated using heat mediated antigen retrieval with sodium citrate buffer (pH 6.0). The section was then incubated with the antibody at room temperature and detected using an HRP conjugated compact polymer system. DAB was used as the chromogen. The section was then counterstained with haematoxylin and mounted with DPX.

Please note: All products are 'FOR RESEARCH USE ONLY. NOT FOR USE IN DIAGNOSTIC OR THERAPEUTIC PROCEDURES'.