

# Anti-GH1 Antibody

Catalog # AP54142

## Product Information

---

Primary Accession	<a href="#">P01241</a>
Reactivity	Human
Host	Mouse
Clonality	Monoclonal
Calculated MW	24847

## Additional Information

---

Gene ID	2688
Other Names	Somatotropin; Growth hormone; GH; GH-N; Growth hormone 1; Pituitary growth hormone
Target/Specificity	Recognizes endogenous levels of GH1 protein.
Format	Mouse IgG. Liquid in PBS containing 50% glycerol, 0.2% BSA and 0.09% (W/V) sodium azide.
Storage	Store at -20 °C. Stable for 12 months from date of receipt

## Protein Information

---

Name	GH1
Function	Plays an important role in growth control. Its major role in stimulating body growth is to stimulate the liver and other tissues to secrete IGF1. It stimulates both the differentiation and proliferation of myoblasts. It also stimulates amino acid uptake and protein synthesis in muscle and other tissues.
Cellular Location	Secreted

## Background

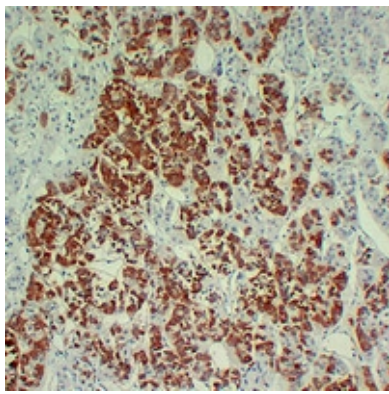
---

Mouse monoclonal antibody to GH1

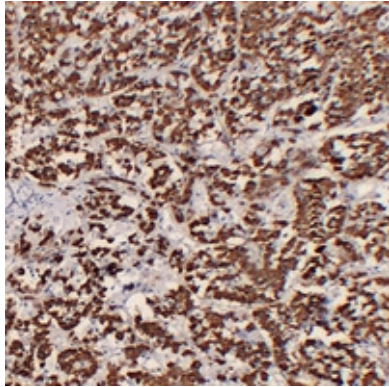
## Images

---

Immunohistochemical analysis of GH1 staining in human hyperprolactinemia formalin fixed paraffin embedded tissue section. The section was pre-treated using heat



mediated antigen retrieval with sodium citrate buffer (pH 6.0). The section was then incubated with the antibody at room temperature and detected using an HRP conjugated compact polymer system. DAB was used as the chromogen. The section was then counterstained with haematoxylin and mounted with DPX.



Immunohistochemical analysis of GH1 staining in human pituitary formalin fixed paraffin embedded tissue section. The section was pre-treated using heat mediated antigen retrieval with sodium citrate buffer (pH 6.0). The section was then incubated with the antibody at room temperature and detected using an HRP conjugated compact polymer system. DAB was used as the chromogen. The section was then counterstained with haematoxylin and mounted with DPX.

Please note: All products are 'FOR RESEARCH USE ONLY. NOT FOR USE IN DIAGNOSTIC OR THERAPEUTIC PROCEDURES'.