

Anti-Mesothelin Antibody

Catalog # AP54148

Product Information

Primary Accession	Q13421
Reactivity	Human
Host	Mouse
Clonality	Monoclonal
Calculated MW	68986

Additional Information

Gene ID	10232
Other Names	MPF; Mesothelin; CAK1 antigen; Pre-pro-megakaryocyte-potentiating factor
Target/Specificity	Recognizes endogenous levels of Mesothelin protein.
Format	Mouse IgG. Liquid in PBS containing 50% glycerol, 0.2% BSA and 0.09% (W/V) sodium azide.
Storage	Store at -20 °C. Stable for 12 months from date of receipt

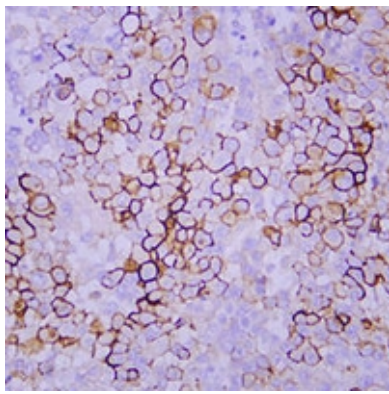
Protein Information

Name	MSLN
Synonyms	MPF
Function	Membrane-anchored forms may play a role in cellular adhesion.
Cellular Location	Cell membrane; Lipid-anchor, GPI-anchor. Golgi apparatus [Isoform 3]: Secreted.
Tissue Location	Expressed in lung. Expressed at low levels in heart, placenta and kidney. Expressed in mesothelial cells. Highly expressed in mesotheliomas, ovarian cancers, and some squamous cell carcinomas (at protein level).

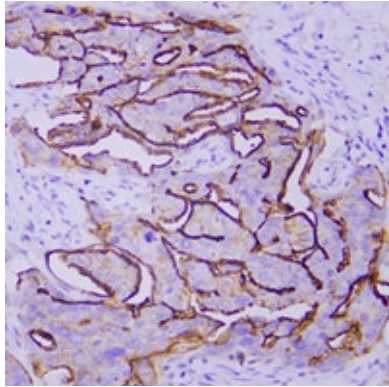
Background

Mouse monoclonal antibody to Mesothelin

Images



Immunohistochemical analysis of Mesothelin staining in human mesothelioma formalin fixed paraffin embedded tissue section. The section was pre-treated using heat mediated antigen retrieval with sodium citrate buffer (pH 6.0). The section was then incubated with the antibody at room temperature and detected using an HRP conjugated compact polymer system. DAB was used as the chromogen. The section was then counterstained with haematoxylin and mounted with DPX.



Immunohistochemical analysis of Mesothelin staining in human ovarian serous carcinoma formalin fixed paraffin embedded tissue section. The section was pre-treated using heat mediated antigen retrieval with sodium citrate buffer (pH 6.0). The section was then incubated with the antibody at room temperature and detected using an HRP conjugated compact polymer system. DAB was used as the chromogen. The section was then counterstained with haematoxylin and mounted with DPX.

Please note: All products are 'FOR RESEARCH USE ONLY. NOT FOR USE IN DIAGNOSTIC OR THERAPEUTIC PROCEDURES'.