

# AMY2A Antibody (C-term)

Affinity Purified Rabbit Polyclonal Antibody (Pab)

Catalog # AP5415b

## Product Information

---

<b>Application</b>	WB, IF, E
<b>Primary Accession</b>	<a href="#">P04746</a>
<b>Other Accession</b>	<a href="#">P00690</a> , <a href="#">P19961</a> , <a href="#">P04745</a> , <a href="#">NP_000690.1</a>
<b>Reactivity</b>	Human, Mouse
<b>Predicted</b>	Pig
<b>Host</b>	Rabbit
<b>Clonality</b>	Polyclonal
<b>Isotype</b>	Rabbit IgG
<b>Clone Names</b>	RB26793
<b>Calculated MW</b>	57707
<b>Antigen Region</b>	484-511

## Additional Information

---

<b>Gene ID</b>	279
<b>Other Names</b>	Pancreatic alpha-amylase, PA, 4-alpha-D-glucan glucanohydrolase, AMY2A
<b>Target/Specificity</b>	This AMY2A antibody is generated from rabbits immunized with a KLH conjugated synthetic peptide between 484-511 amino acids from the C-terminal region of human AMY2A.
<b>Dilution</b>	WB~~1:1000 IF~~1:10~50 E~~Use at an assay dependent concentration.
<b>Format</b>	Purified polyclonal antibody supplied in PBS with 0.09% (W/V) sodium azide. This antibody is purified through a protein A column, followed by peptide affinity purification.
<b>Storage</b>	Maintain refrigerated at 2-8°C for up to 2 weeks. For long term storage store at -20°C in small aliquots to prevent freeze-thaw cycles.
<b>Precautions</b>	AMY2A Antibody (C-term) is for research use only and not for use in diagnostic or therapeutic procedures.

## Protein Information

---

<b>Name</b>	AMY2A
<b>Cellular Location</b>	Secreted, extracellular space.
<b>Tissue Location</b>	Detected in pancreas (at protein level).

## Background

---

Amylases are secreted proteins that hydrolyze 1,4-alpha-glucoside bonds in oligosaccharides and polysaccharides, and thus catalyze the first step in digestion of dietary starch and glycogen. The human genome has a cluster of several amylase genes that are expressed at high levels in either salivary gland or pancreas. This gene encodes an amylase isoenzyme produced by the pancreas.

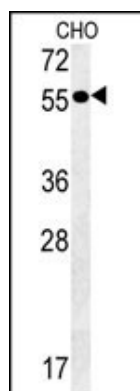
## References

---

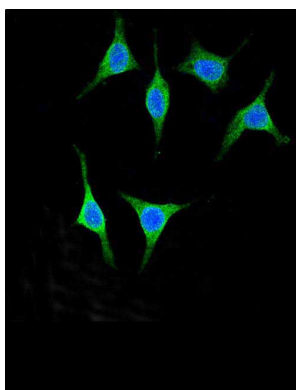
- Endo, T., et al. Diabetes 58(3):732-737(2009)  
Baltova, S.D. Folia Med (Plovdiv) 47(1):37-41(2005)  
Scheil, H.G., et al. Anthropol Anz 62(4):429-434(2004)  
Numao, S., et al. J. Biol. Chem. 279(46):48282-48291(2004)  
Baltova, S., et al. Coll Antropol 28 SUPPL 2, 291-295 (2004) :  
Jacob, M., et al. Biochem. Cell Biol. 70 (10-11), 1105-1114 (1992) :  
Groot, P.C., et al. Genomics 8(1):97-105(1990)  
Horii, A., et al. Gene 60(1):57-64(1987)  
Nishide, T., et al. Gene 41 (2-3), 299-304 (1986) :  
Kaczmarek, M.J., et al. Clin. Chim. Acta 79(1):69-73(1977)

## Images

---



AMY2A Antibody (C-term)(Cat. #AP5415b) western blot analysis in CHO cell line lysates (35ug/lane). This demonstrates the AMY2A antibody detected the AMY2A protein (arrow).



Confocal immunofluorescent analysis of AMY2A Antibody (C-term)(Cat. #AP5415b) with 293 cell followed by Alexa Fluor® 488-conjugated goat anti-rabbit IgG (green). DAPI was used to stain the cell nuclear (blue).

Please note: All products are 'FOR RESEARCH USE ONLY. NOT FOR USE IN DIAGNOSTIC OR THERAPEUTIC PROCEDURES'.