

# AXIN2 Antibody (C-term)

Affinity Purified Rabbit Polyclonal Antibody (Pab)

Catalog # AP5416b

## Product Information

---

<b>Application</b>	WB, IHC-P, FC, E
<b>Primary Accession</b>	<a href="#">Q9Y2T1</a>
<b>Other Accession</b>	<a href="#">O70240</a> , <a href="#">O88566</a> , <a href="#">NP_004646.3</a>
<b>Reactivity</b>	Human, Rat, Mouse
<b>Predicted</b>	Mouse, Rat
<b>Host</b>	Rabbit
<b>Clonality</b>	Polyclonal
<b>Isotype</b>	Rabbit IgG
<b>Clone Names</b>	RB26798
<b>Calculated MW</b>	93568
<b>Antigen Region</b>	816-843

## Additional Information

---

<b>Gene ID</b>	8313
<b>Other Names</b>	Axin-2, Axin-like protein, Axil, Axis inhibition protein 2, Conductin, AXIN2
<b>Target/Specificity</b>	This AXIN2 antibody is generated from rabbits immunized with a KLH conjugated synthetic peptide between 816-843 amino acids from the C-terminal region of human AXIN2.
<b>Dilution</b>	WB~~1:1000 IHC-P~~1:100~500 FC~~1:10~50 E~~Use at an assay dependent concentration.
<b>Format</b>	Purified polyclonal antibody supplied in PBS with 0.05% (V/V) Proclin 300. This antibody is prepared by Saturated Ammonium Sulfate (SAS) precipitation followed by dialysis against PBS.
<b>Storage</b>	Maintain refrigerated at 2-8°C for up to 2 weeks. For long term storage store at -20°C in small aliquots to prevent freeze-thaw cycles.
<b>Precautions</b>	AXIN2 Antibody (C-term) is for research use only and not for use in diagnostic or therapeutic procedures.

## Protein Information

---

<b>Name</b>	AXIN2
<b>Function</b>	Inhibitor of the Wnt signaling pathway. Down-regulates beta- catenin. Probably facilitate the phosphorylation of beta-catenin and APC by GSK3B.

<b>Cellular Location</b>	Cytoplasm.
<b>Tissue Location</b>	Expressed in brain and lymphoblast.

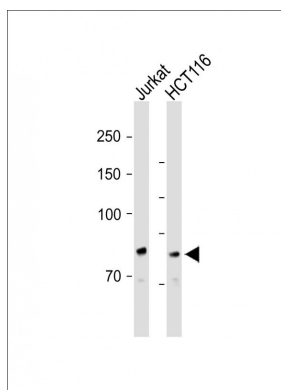
## Background

The Axin-related protein, Axin2, presumably plays an important role in the regulation of the stability of beta-catenin in the Wnt signaling pathway, like its rodent homologs, mouse conductin/rat axil. In mouse, conductin organizes a multiprotein complex of APC (adenomatous polyposis of the colon), beta-catenin, glycogen synthase kinase 3-beta, and conductin, which leads to the degradation of beta-catenin. Apparently, the deregulation of beta-catenin is an important event in the genesis of a number of malignancies. The AXIN2 gene has been mapped to 17q23-q24, a region that shows frequent loss of heterozygosity in breast cancer, neuroblastoma, and other tumors. Mutations in this gene have been associated with colorectal cancer with defective mismatch repair.

## References

Inkster, B., et al. Neuroimage (2010) In press :  
 Guey, L.T., et al. Eur. Urol. 57(2):283-292(2010)  
 Couch, F.J., et al. Cancer Epidemiol. Biomarkers Prev. 19(1):251-257(2010)  
 Hosgood, H.D. III, et al. Respir Med 103(12):1866-1870(2009)  
 Olschwang, S., et al. J Oncol 2009, 306786 (2009) :  
 Dong, X., et al. Cytogenet. Cell Genet. 93 (1-2), 26-28 (2001) :  
 Liu, W., et al. Nat. Genet. 26(2):146-147(2000)  
 von Kries, J.P., et al. Nat. Struct. Biol. 7(9):800-807(2000)  
 Kikuchi, A. Cytokine Growth Factor Rev. 10 (3-4), 255-265 (1999) :  
 Mai, M., et al. Genomics 55(3):341-344(1999)

## Images



All lanes : Anti-AXIN2 Antibody (C-term) at 1:2000 dilution  
 Lane 1: Jurkat whole cell lysate Lane 2: HCT116 whole cell lysate  
 Lysates/proteins at 20 µg per lane. Secondary Goat Anti-Rabbit IgG, (H+L), Peroxidase conjugated (ASP1615) at 1/15000 dilution. Observed band size : 85kDa  
 Blocking/Dilution buffer: 5% NFDM/TBST.

Please note: All products are 'FOR RESEARCH USE ONLY. NOT FOR USE IN DIAGNOSTIC OR THERAPEUTIC PROCEDURES'.