

Anti-Collagen 10 alpha 1 Antibody

Catalog # AP54177

Product Information

Application	WB
Primary Accession	Q03692
Reactivity	Human, Mouse, Rat
Host	Rabbit
Clonality	Polyclonal
Calculated MW	66158

Additional Information

Gene ID	1300
Other Names	Collagen alpha-1(X) chain
Target/Specificity	Recombinant full length protein of human Collagen 10 alpha 1
Dilution	WB~~1/500 - 1/2000
Format	Liquid in 0.42% Potassium phosphate, 0.87% Sodium chloride, pH 7.3, 30% glycerol, and 0.09% (W/V) sodium azide.
Storage	Store at -20 °C.Stable for 12 months from date of receipt

Protein Information

Name	COL10A1
Function	Type X collagen is a product of hypertrophic chondrocytes and has been localized to presumptive mineralization zones of hyaline cartilage.
Cellular Location	Secreted, extracellular space, extracellular matrix

Background

Rabbit polyclonal antibody to Collagen 10 alpha 1

Images

Western blot analysis of Collagen 10 alpha 1 expression in MCF7 (A) whole cell lysates.

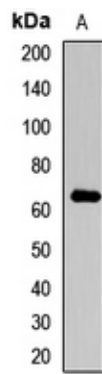


Image not found : 202102/CQA3234_IH.jpg

Immunohistochemical analysis of Collagen 10 alpha 1 staining in human lung cancer formalin fixed paraffin embedded tissue section. The section was pre-treated using heat mediated antigen retrieval with sodium citrate buffer (pH 6.0). The section was then incubated with the antibody at room temperature and detected using an HRP conjugated compact polymer system. DAB was used as the chromogen. The section was then counterstained with haematoxylin and mounted with DPX.

Please note: All products are 'FOR RESEARCH USE ONLY. NOT FOR USE IN DIAGNOSTIC OR THERAPEUTIC PROCEDURES'.